

Intersection (90.9% of union)

All: 352207, Ti/Tv: 2.4

Known: 156071, Ti/Tv: 2.4

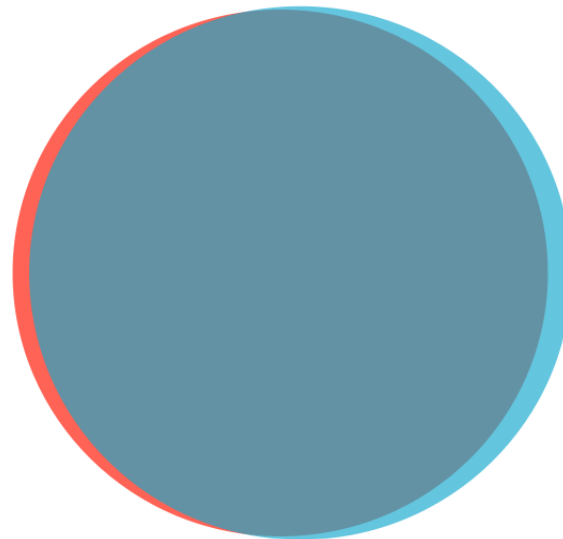
Novel: 196136, Ti/Tv: 2.4

QCALL (3.5% of union)

All: 13738, Ti/Tv: 0.9

Known: 1343, Ti/Tv: 1.1

Novel: 12395, Ti/Tv: 0.9



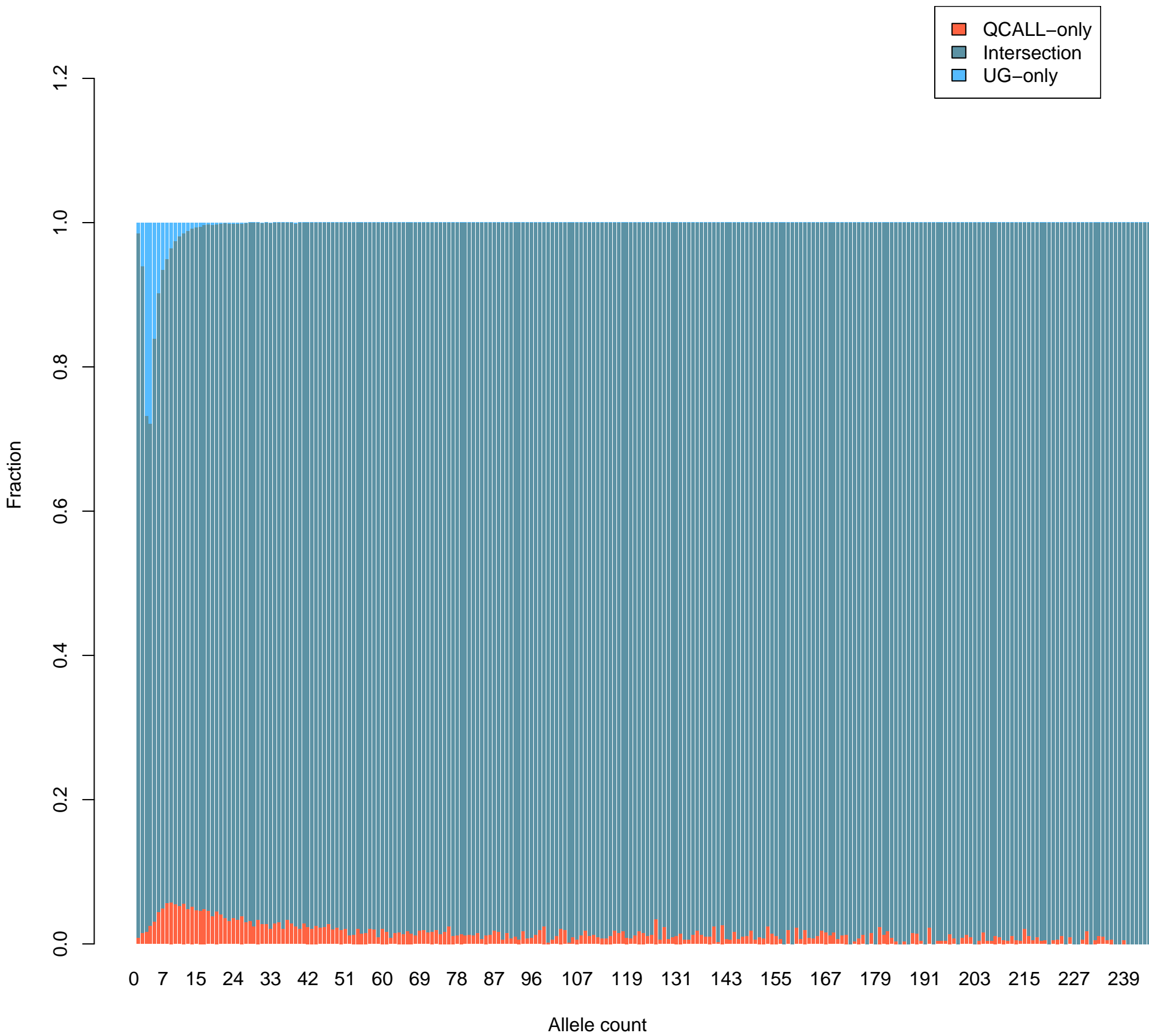
UG (5.6% of union)

All: 21662, Ti/Tv: 0.7

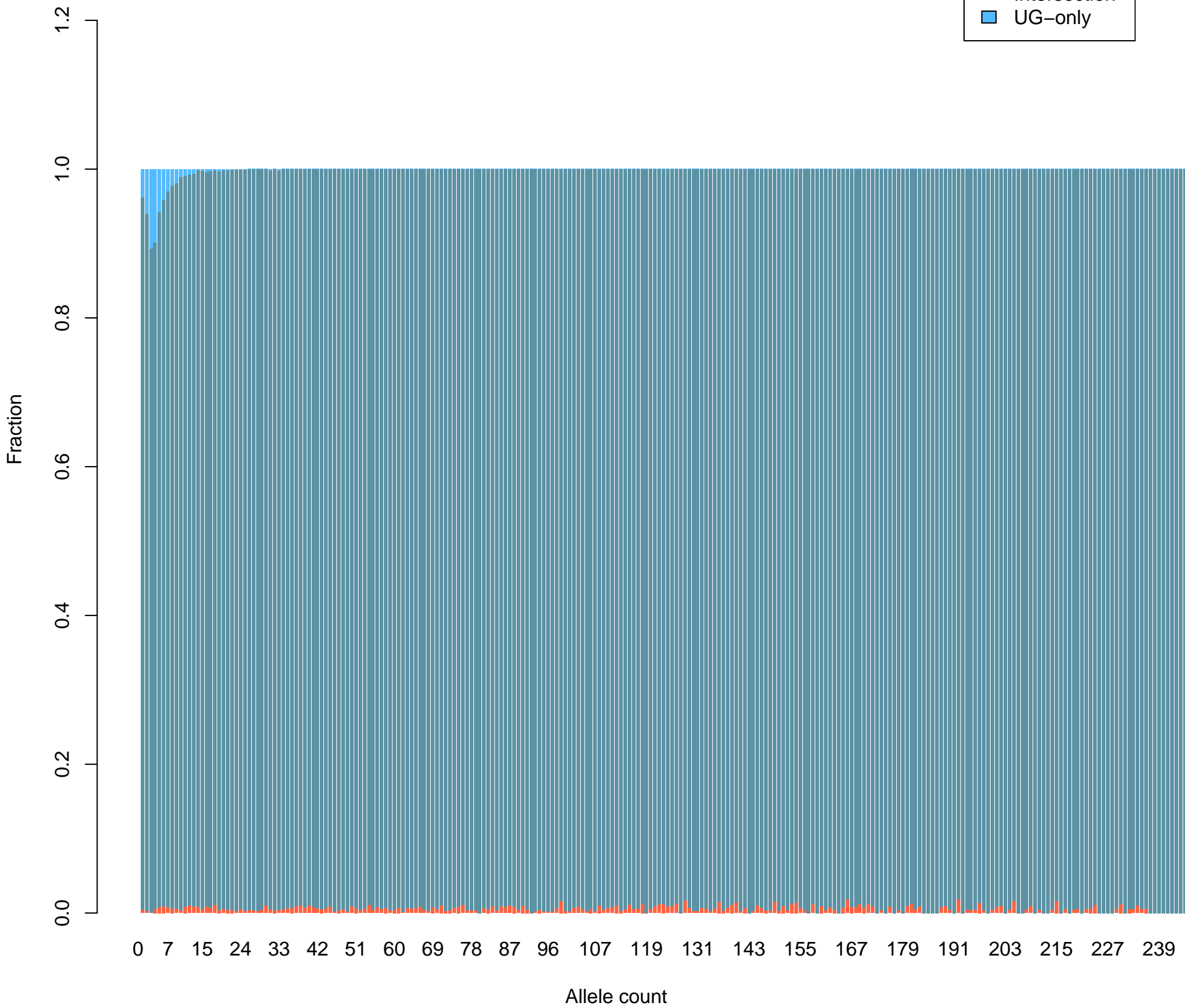
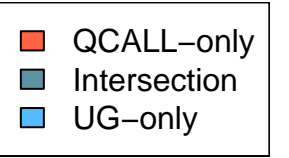
Known: 1103, Ti/Tv: 1.4

Novel: 20559, Ti/Tv: 0.7

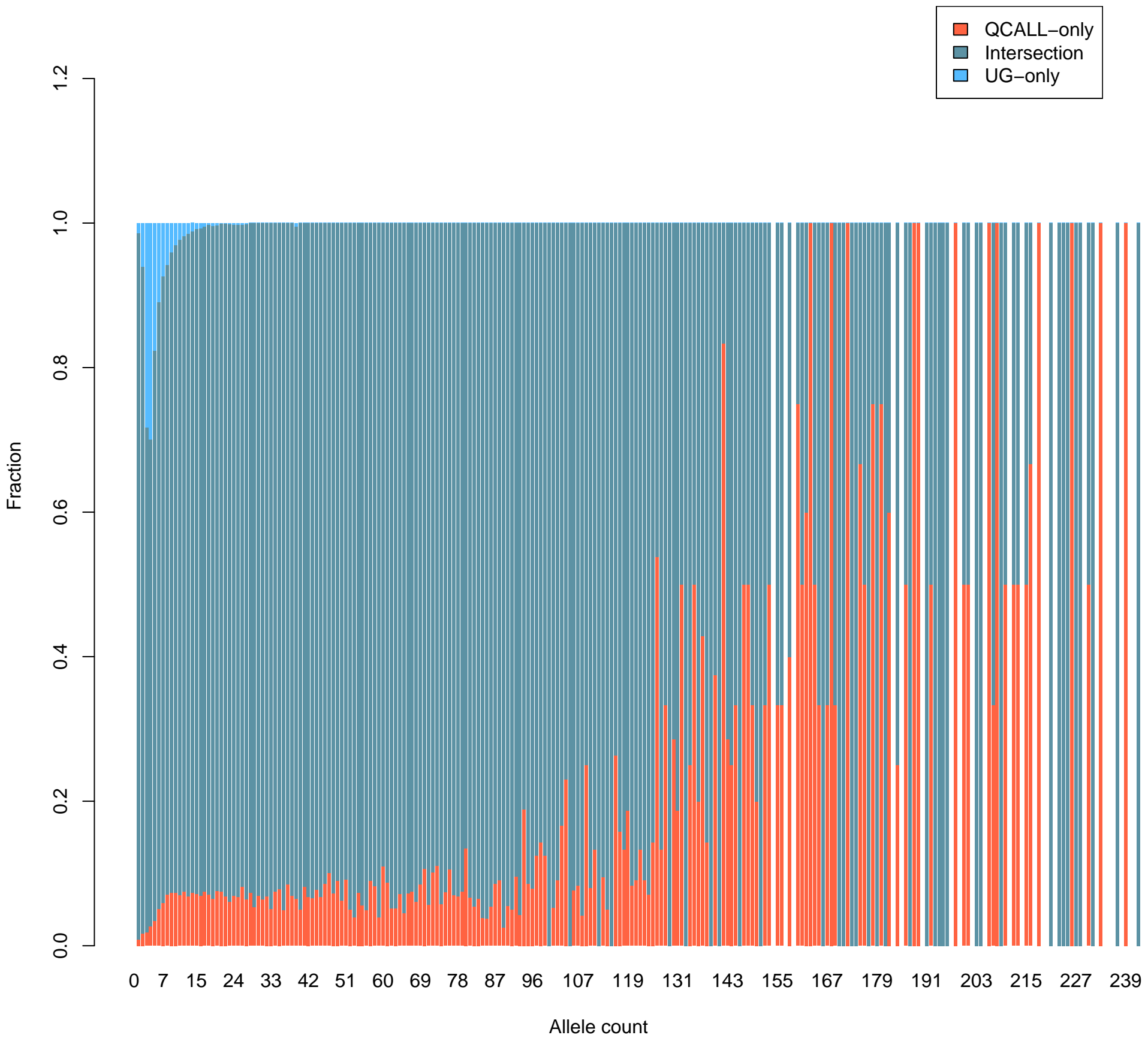
Callset concordance per allele count (all variants)



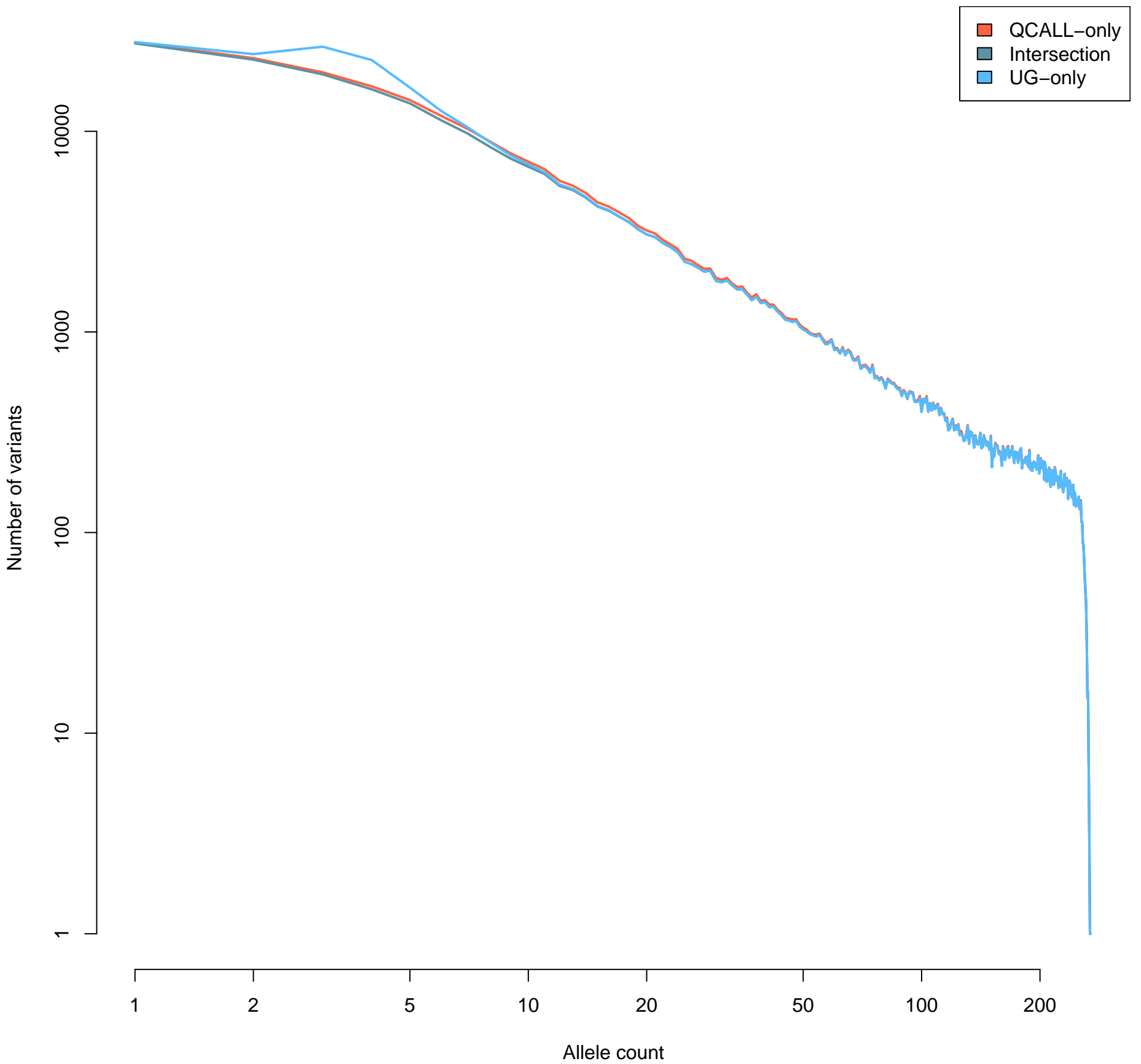
Callset concordance per allele count (known variants)



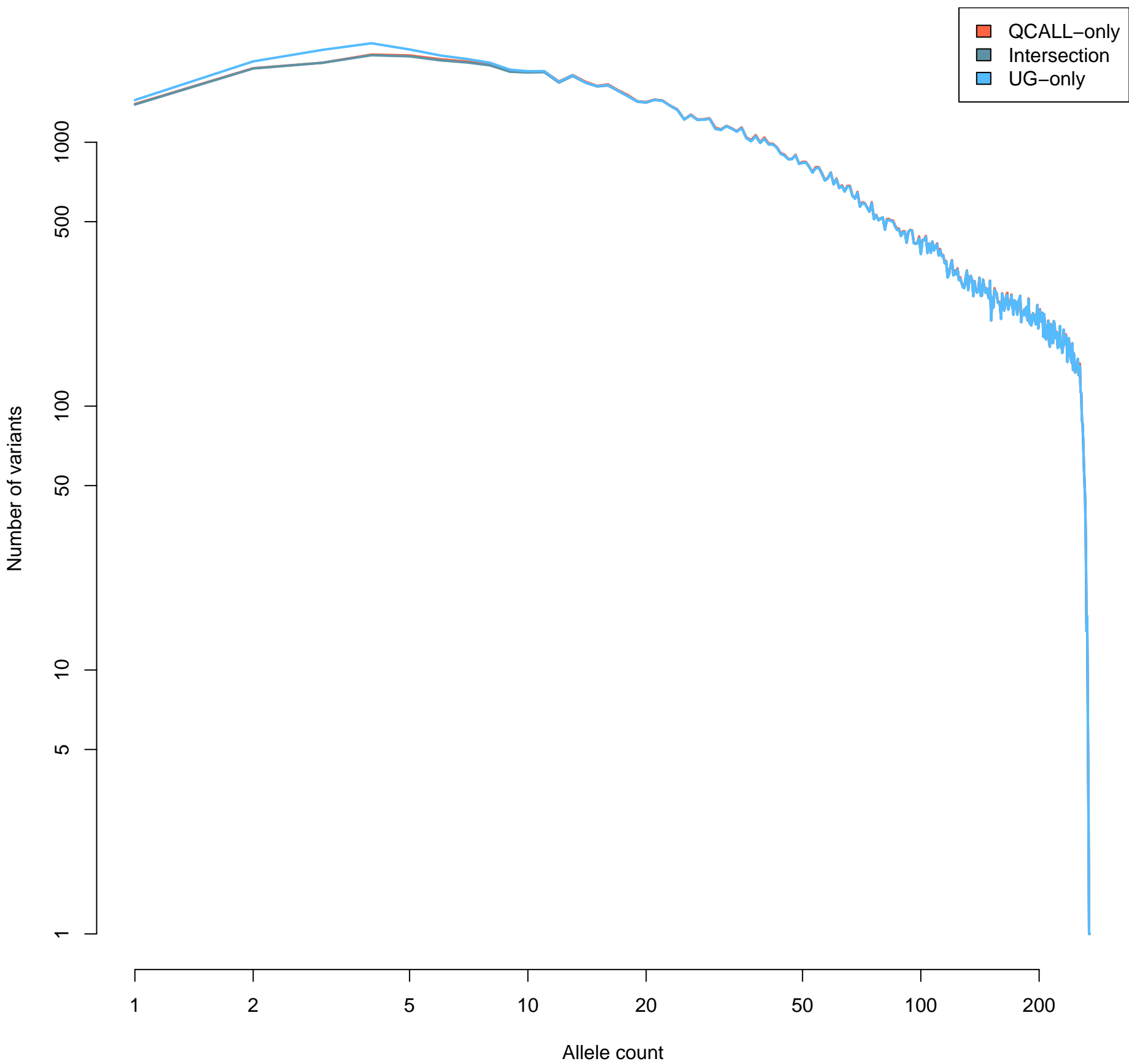
Callset concordance per allele count (novel variants)



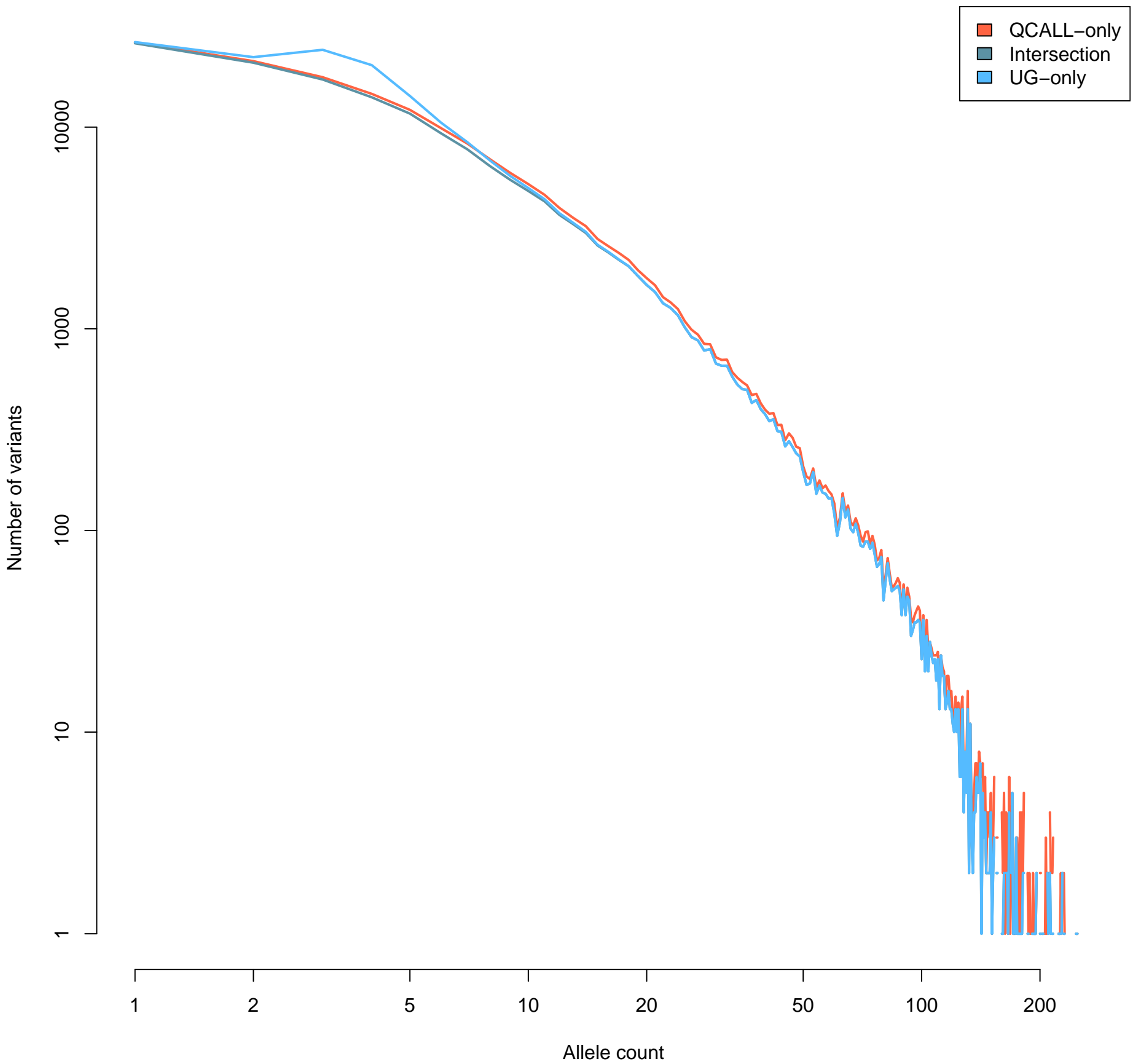
Allele count spectrum (all variants)



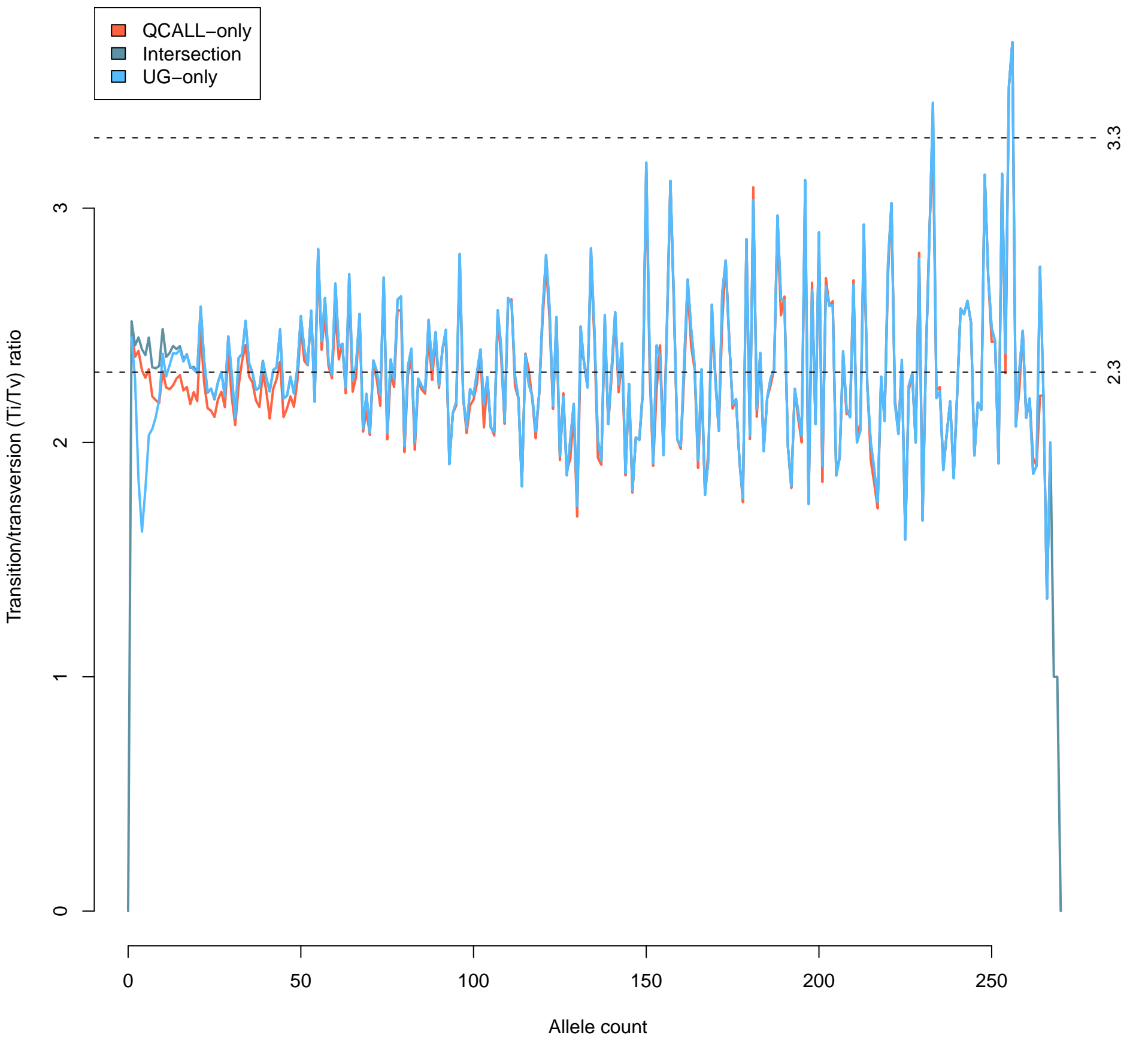
Allele count spectrum (known variants)



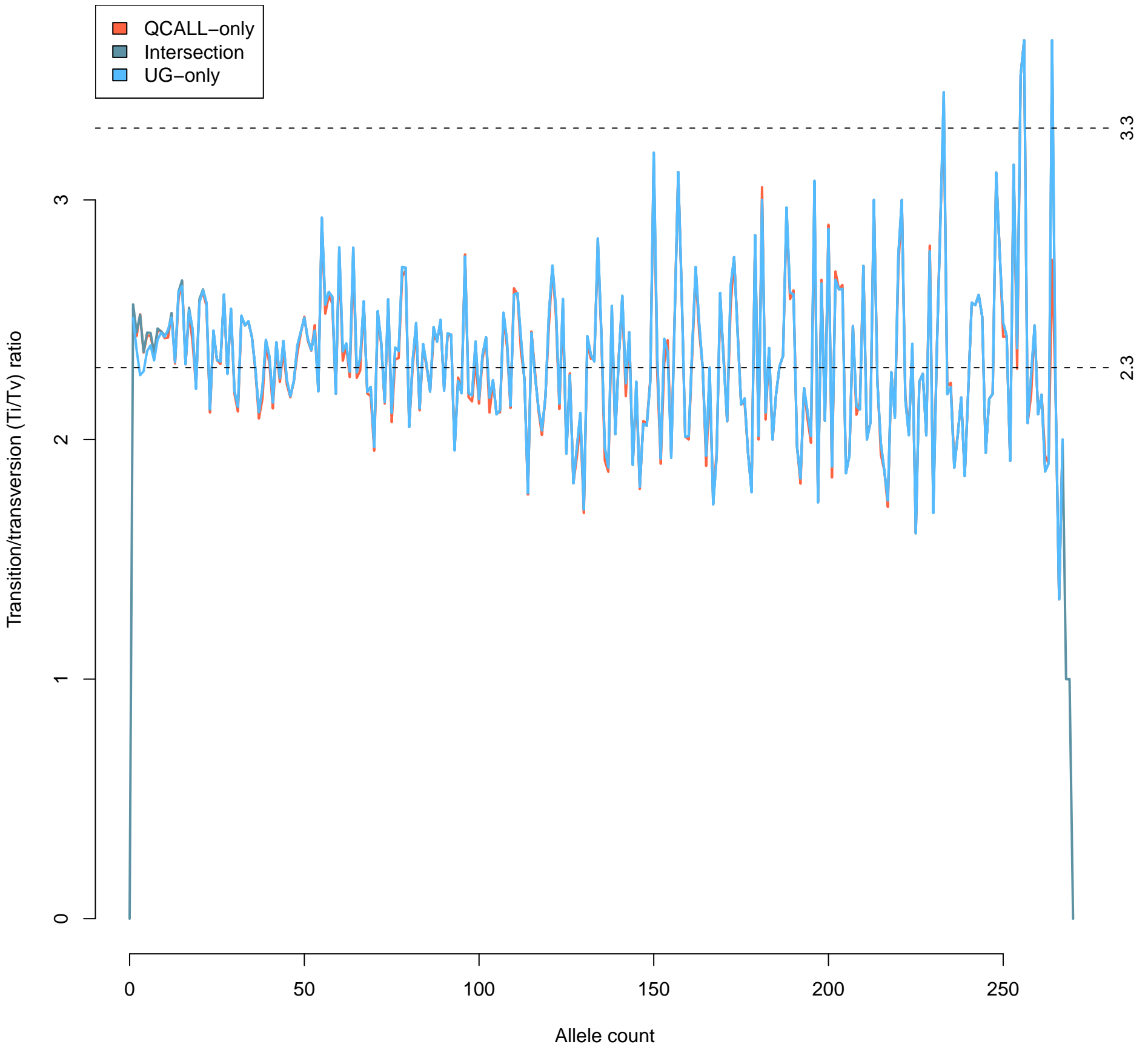
Allele count spectrum (novel variants)



Ti/Tv spectrum (all variants)



Ti/Tv spectrum (known variants)



Ti/Tv spectrum (novel variants)

