

Intersection (92.8% of union)

All: 386559, Ti/Tv: 2.4

Known: 157982, Ti/Tv: 2.4

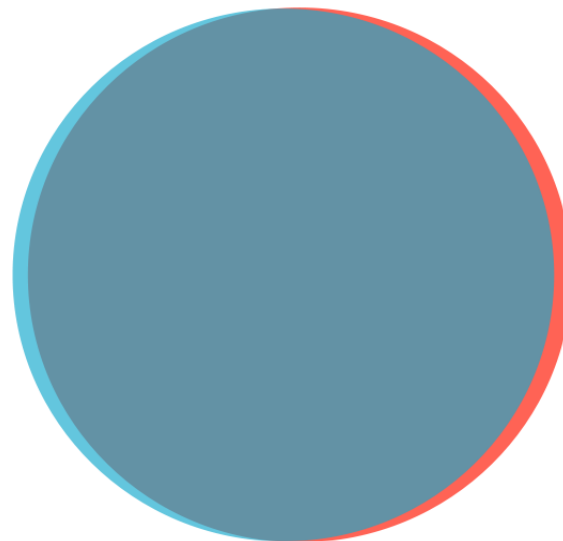
Novel: 228577, Ti/Tv: 2.4

QCALL (4.2% of union)

All: 17336, Ti/Tv: 0.9

Known: 1599, Ti/Tv: 1.1

Novel: 15737, Ti/Tv: 0.9



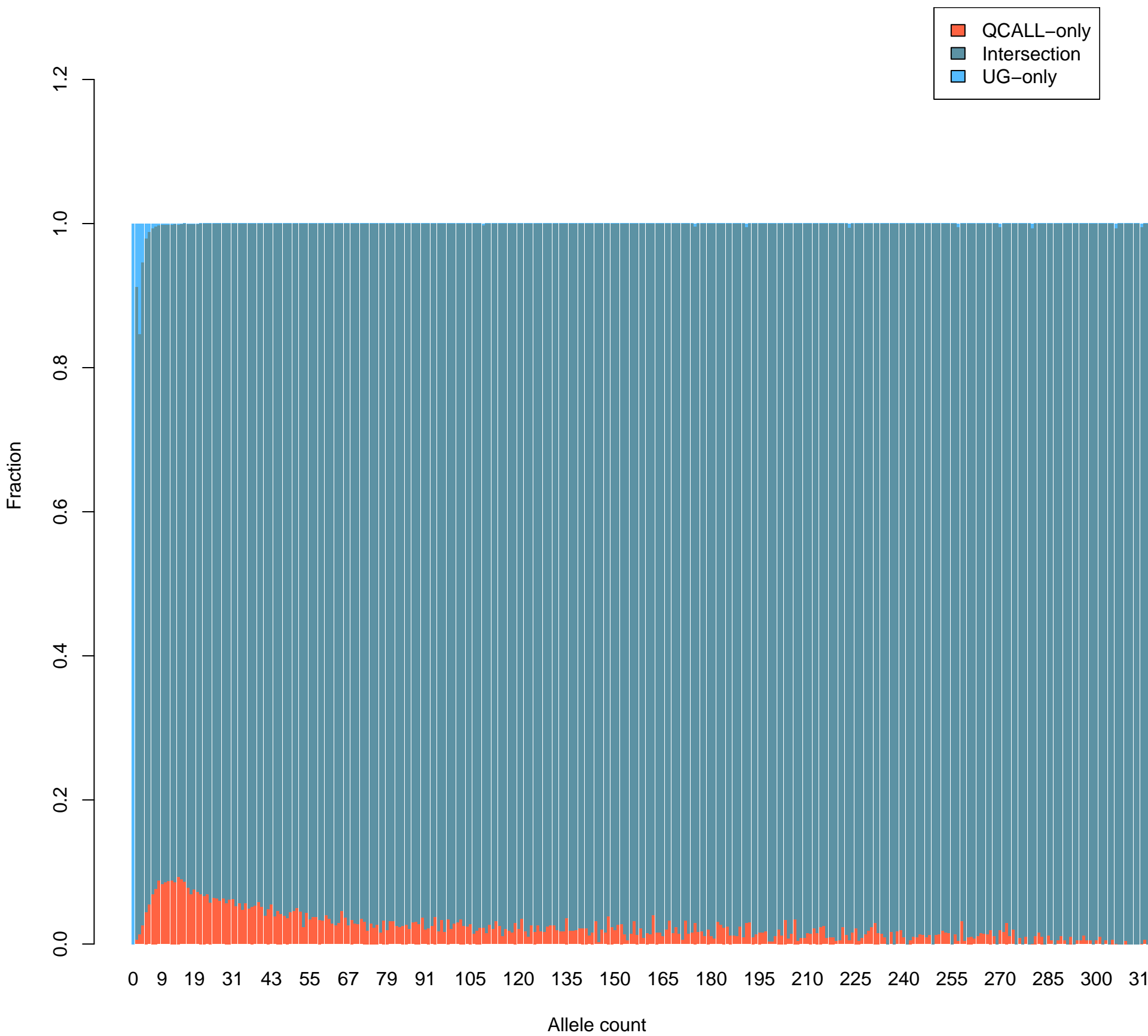
UG (3.0% of union)

All: 12616, Ti/Tv: 0.8

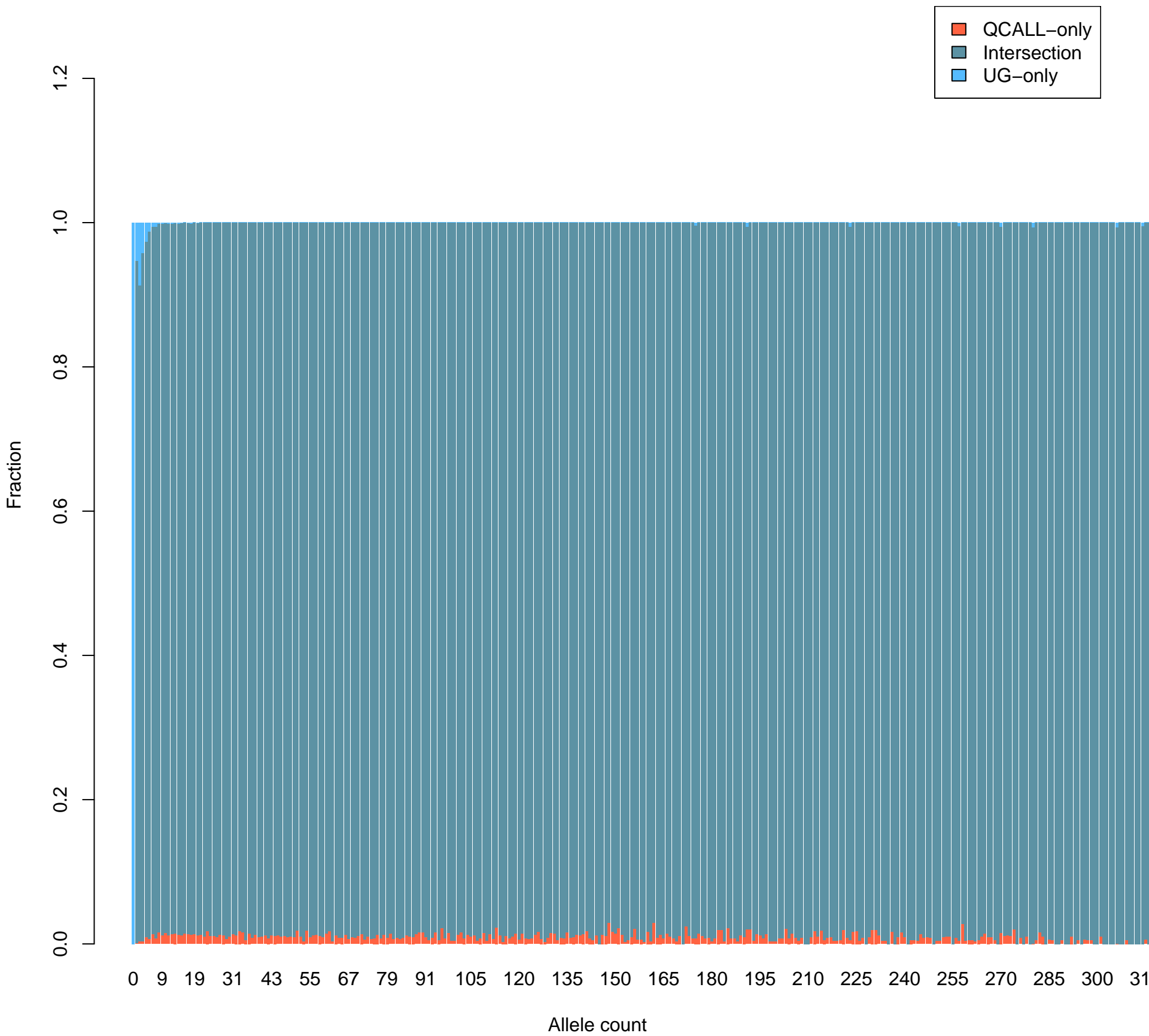
Known: 526, Ti/Tv: 1.5

Novel: 12090, Ti/Tv: 0.7

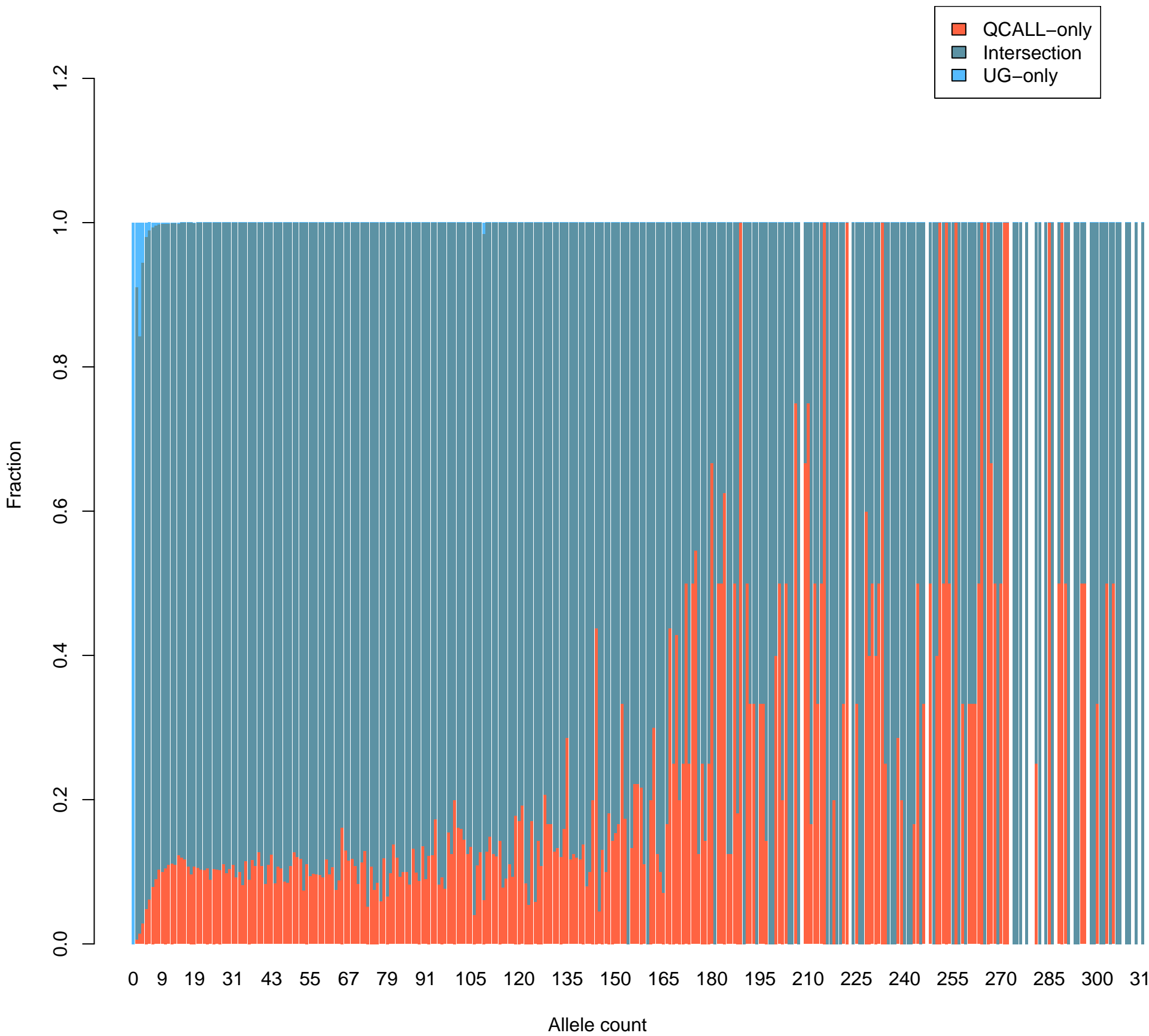
# Callset concordance per allele count (all variants)



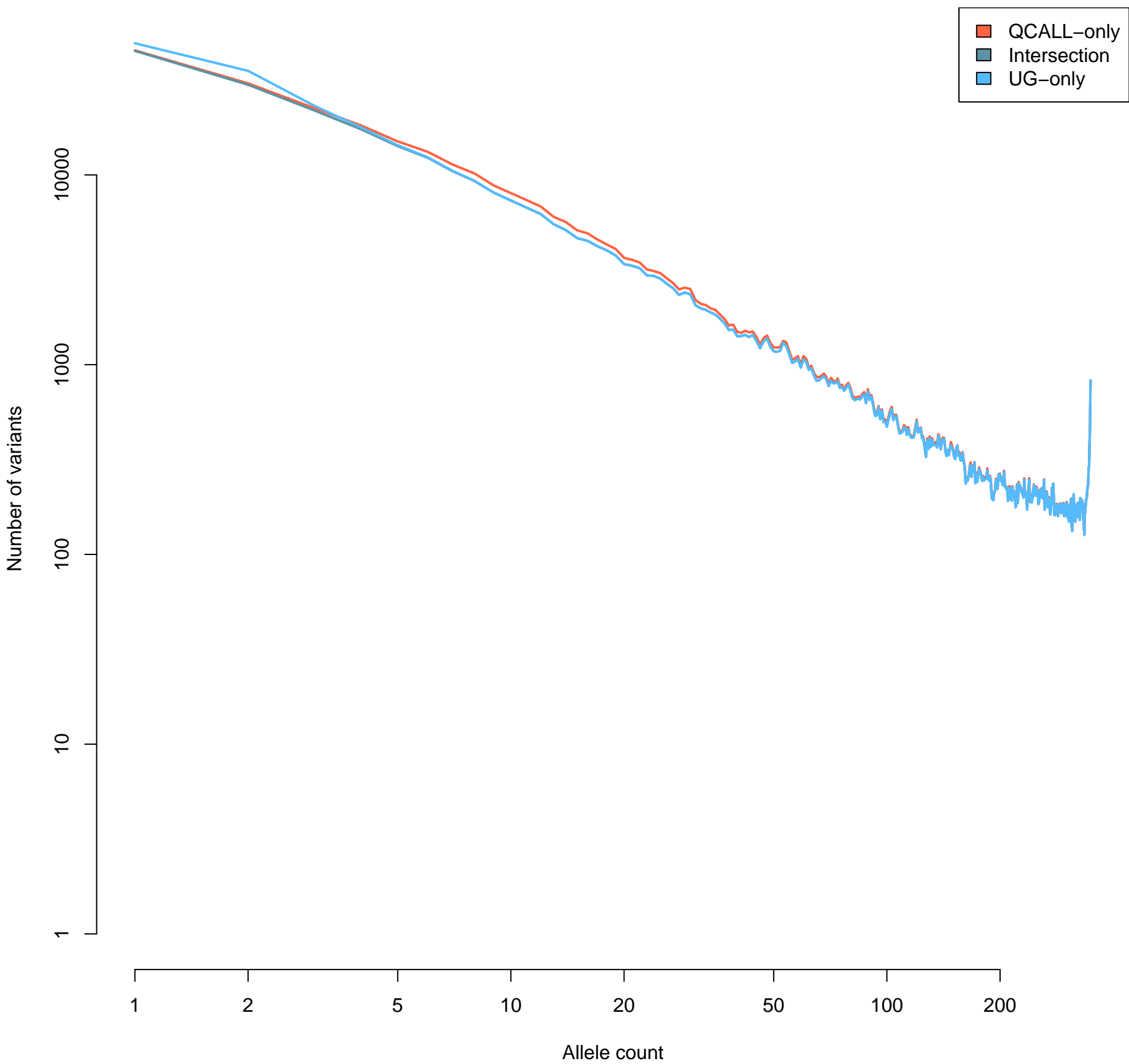
# Callset concordance per allele count (known variants)



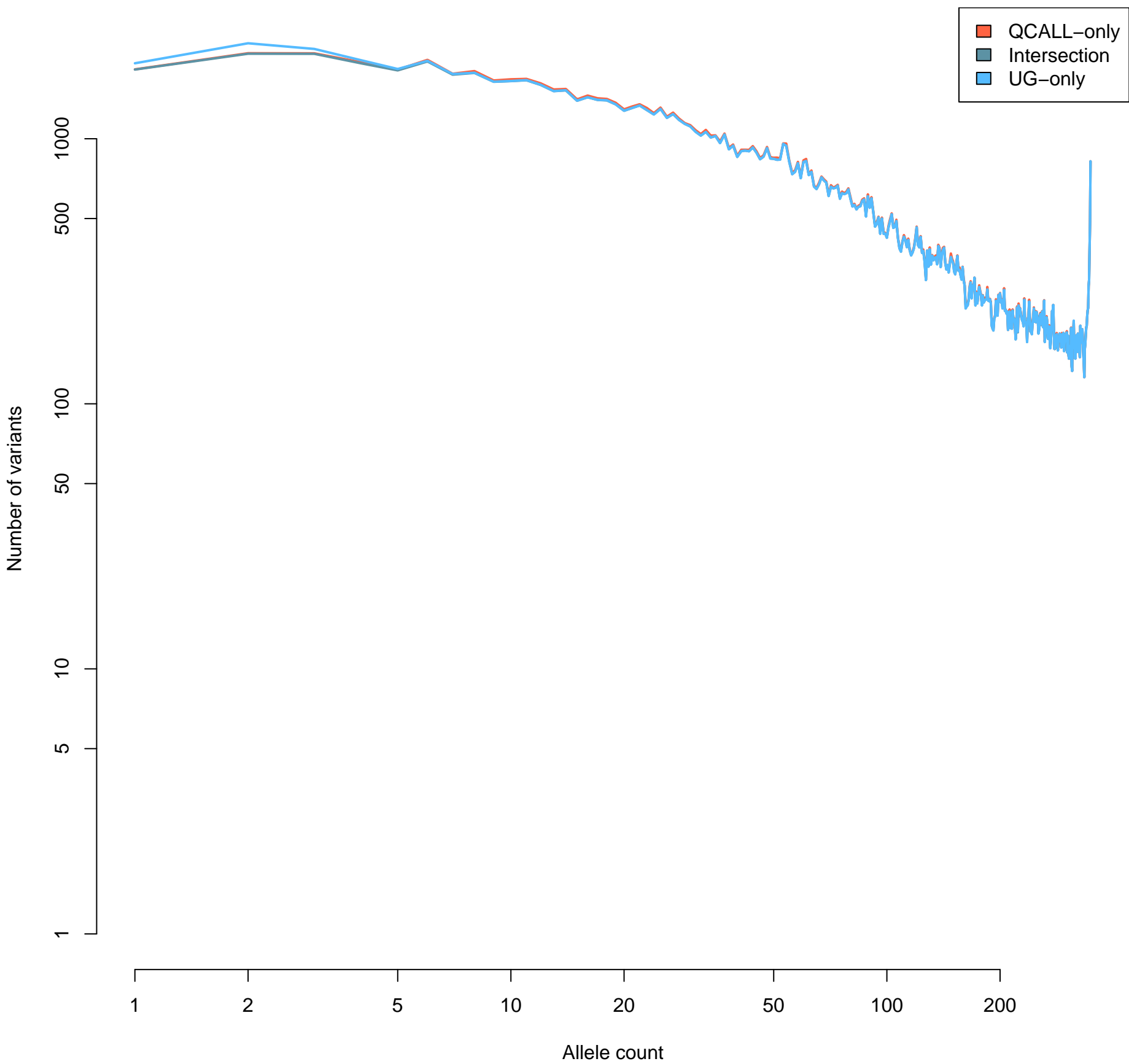
# Callset concordance per allele count (novel variants)



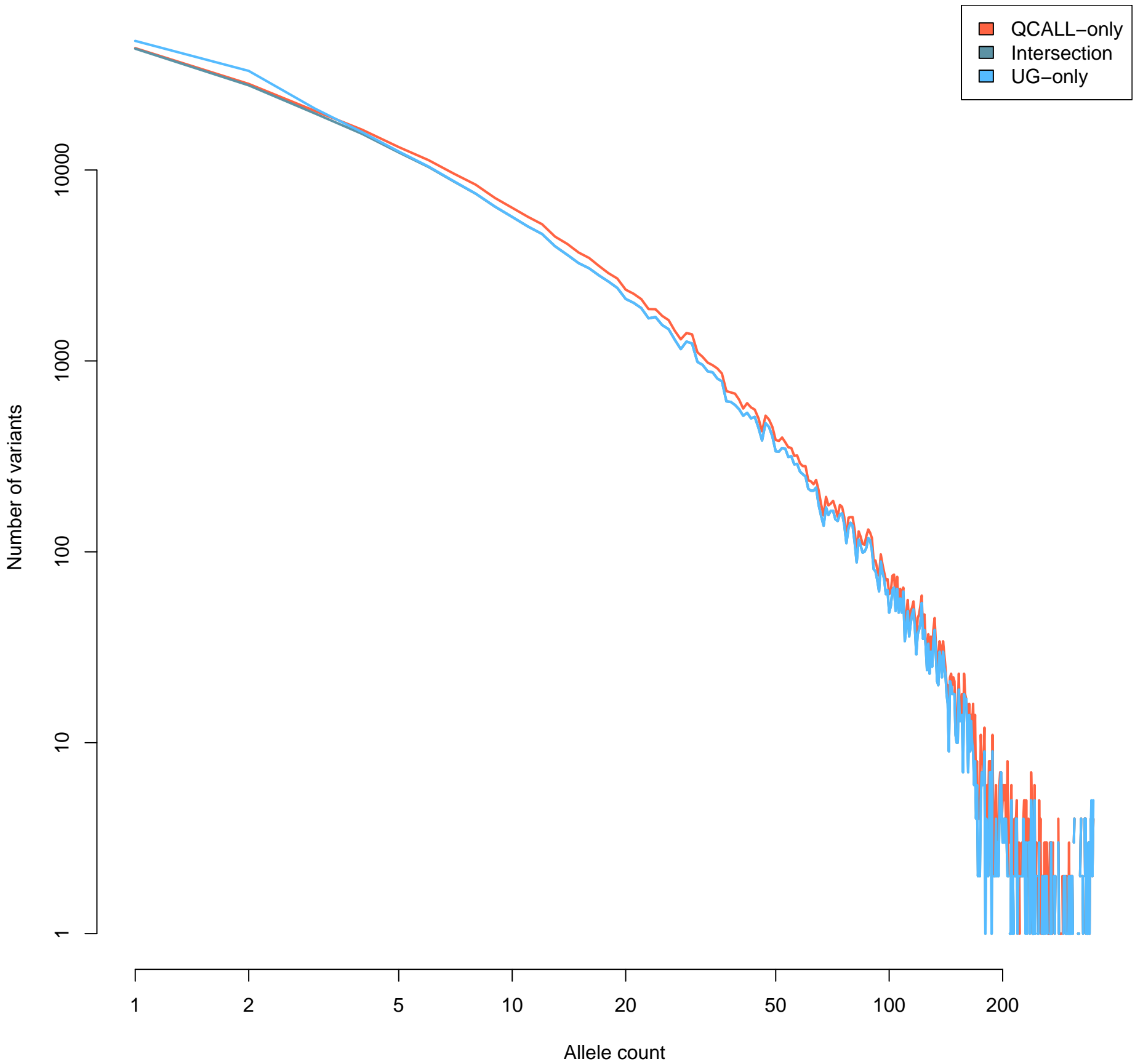
# Allele count spectrum (all variants)



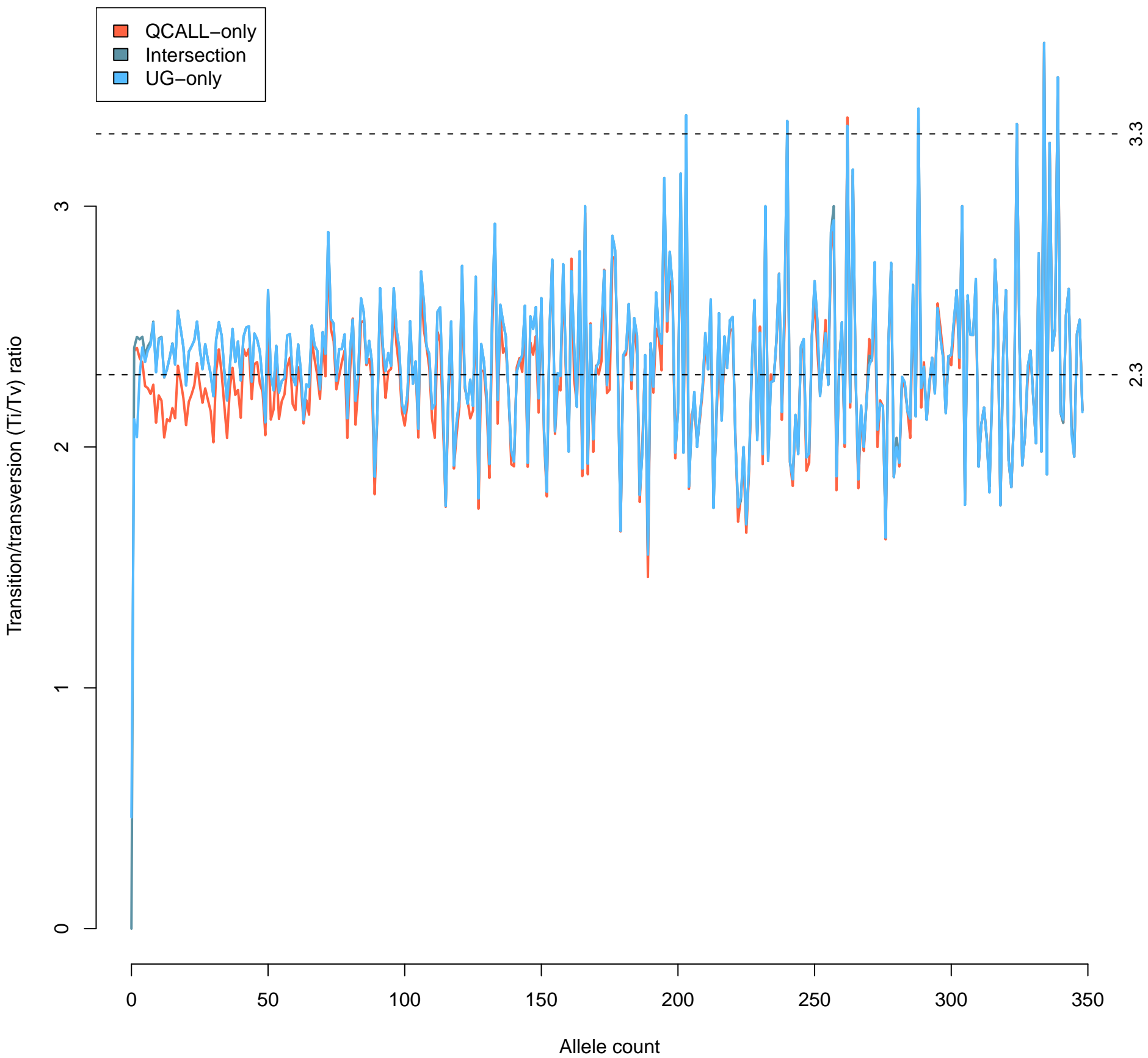
# Allele count spectrum (known variants)



# Allele count spectrum (novel variants)

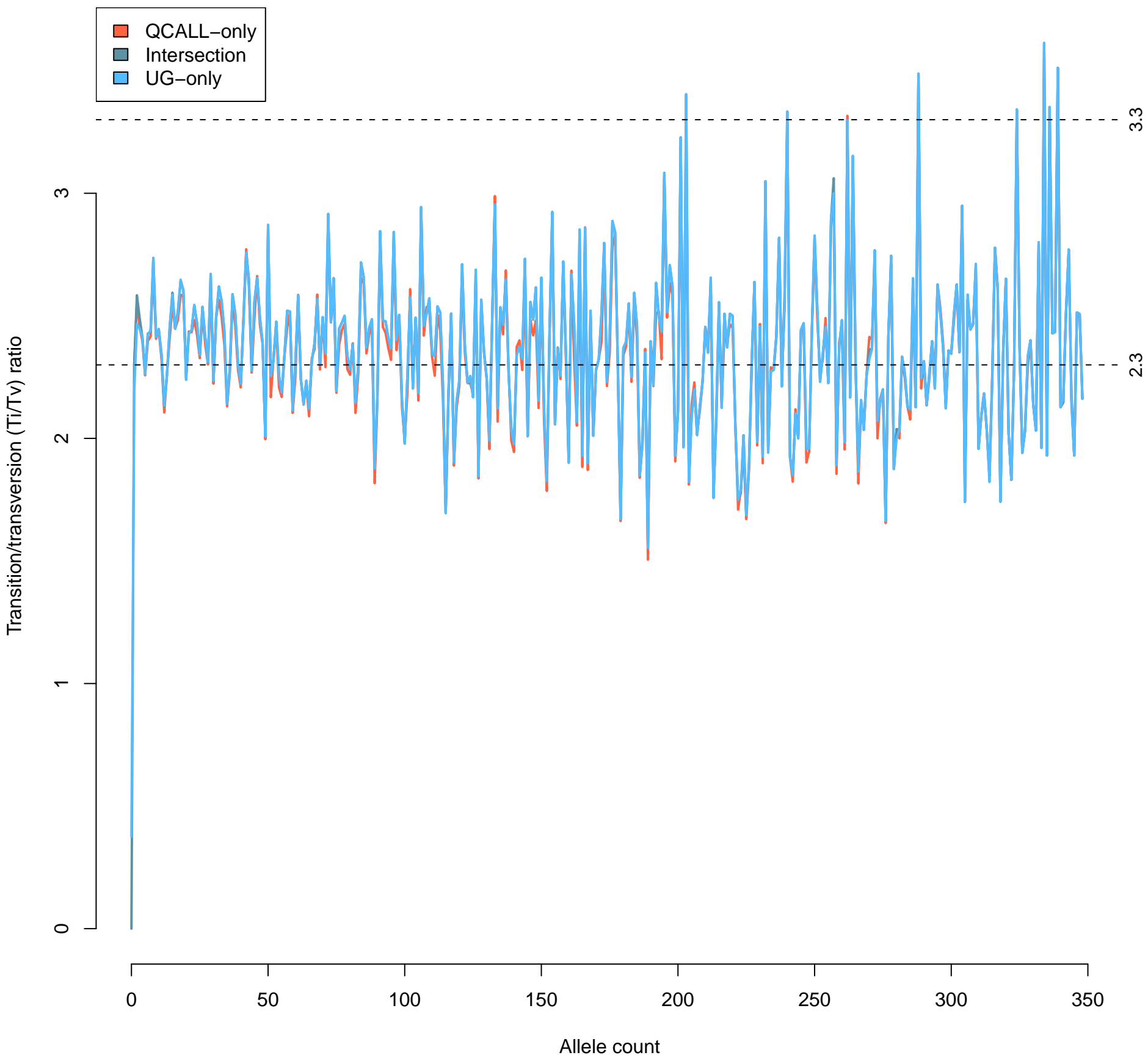


# Ti/Tv spectrum (all variants)





# Ti/Tv spectrum (known variants)



# Ti/Tv spectrum (novel variants)

