

Intersection (87.1% of union)

All: 150931, Ti/Tv: 2.4

Known: 115932, Ti/Tv: 2.4

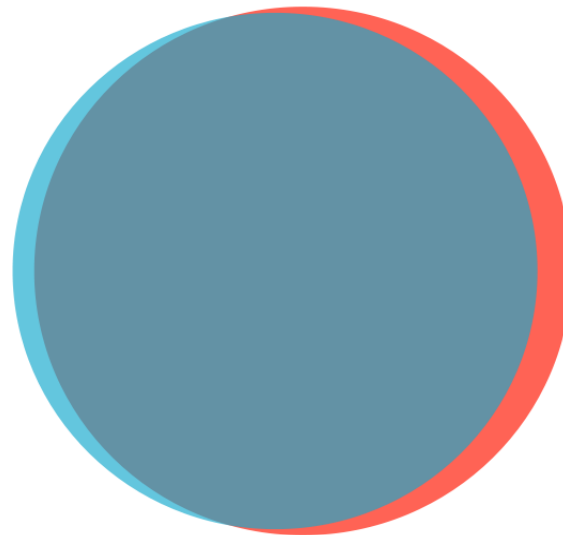
Novel: 34999, Ti/Tv: 2.4

QCALL (8.6% of union)

All: 14960, Ti/Tv: 0.8

Known: 1241, Ti/Tv: 1.2

Novel: 13719, Ti/Tv: 0.8



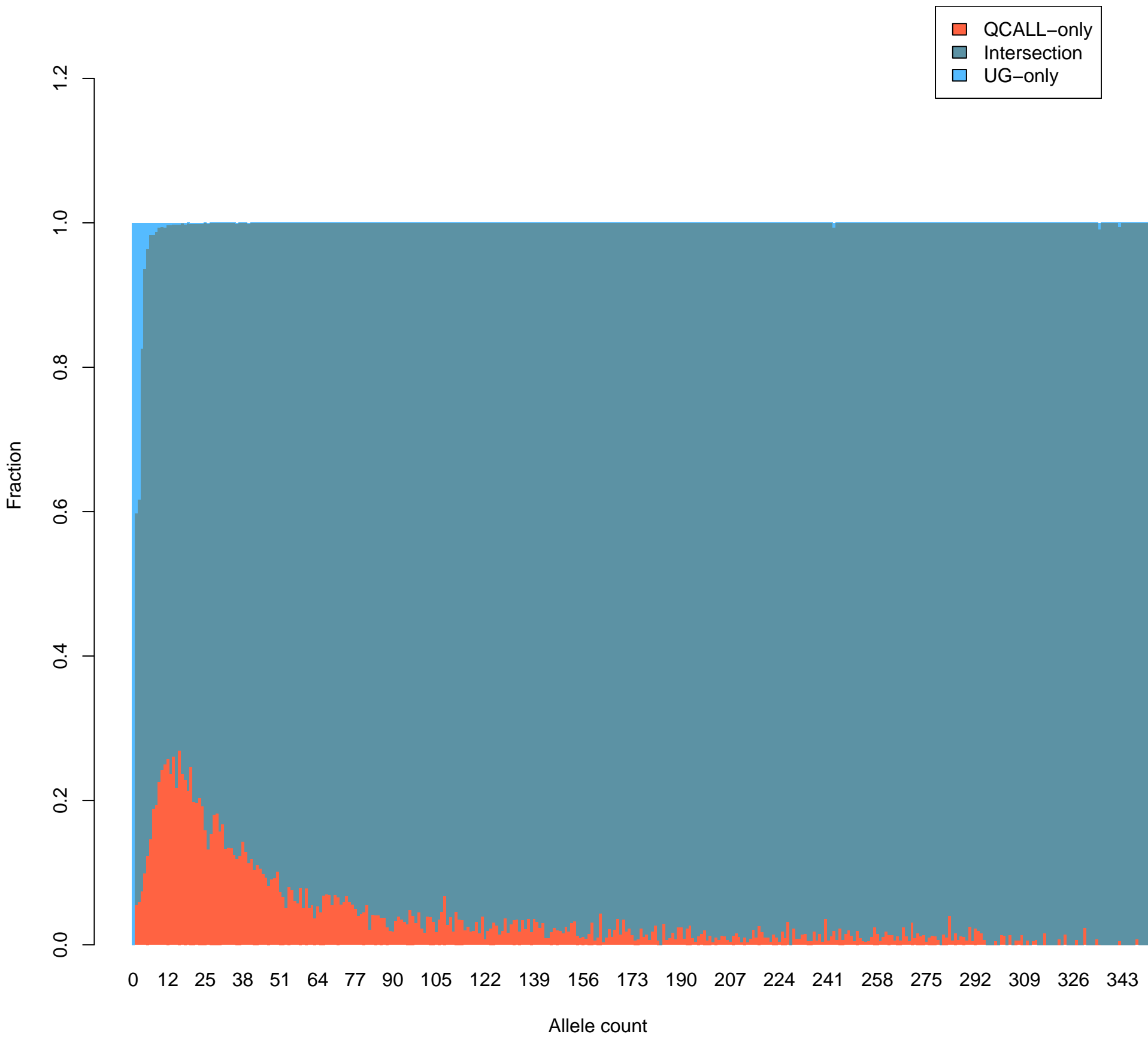
UG (4.2% of union)

All: 7341, Ti/Tv: 0.7

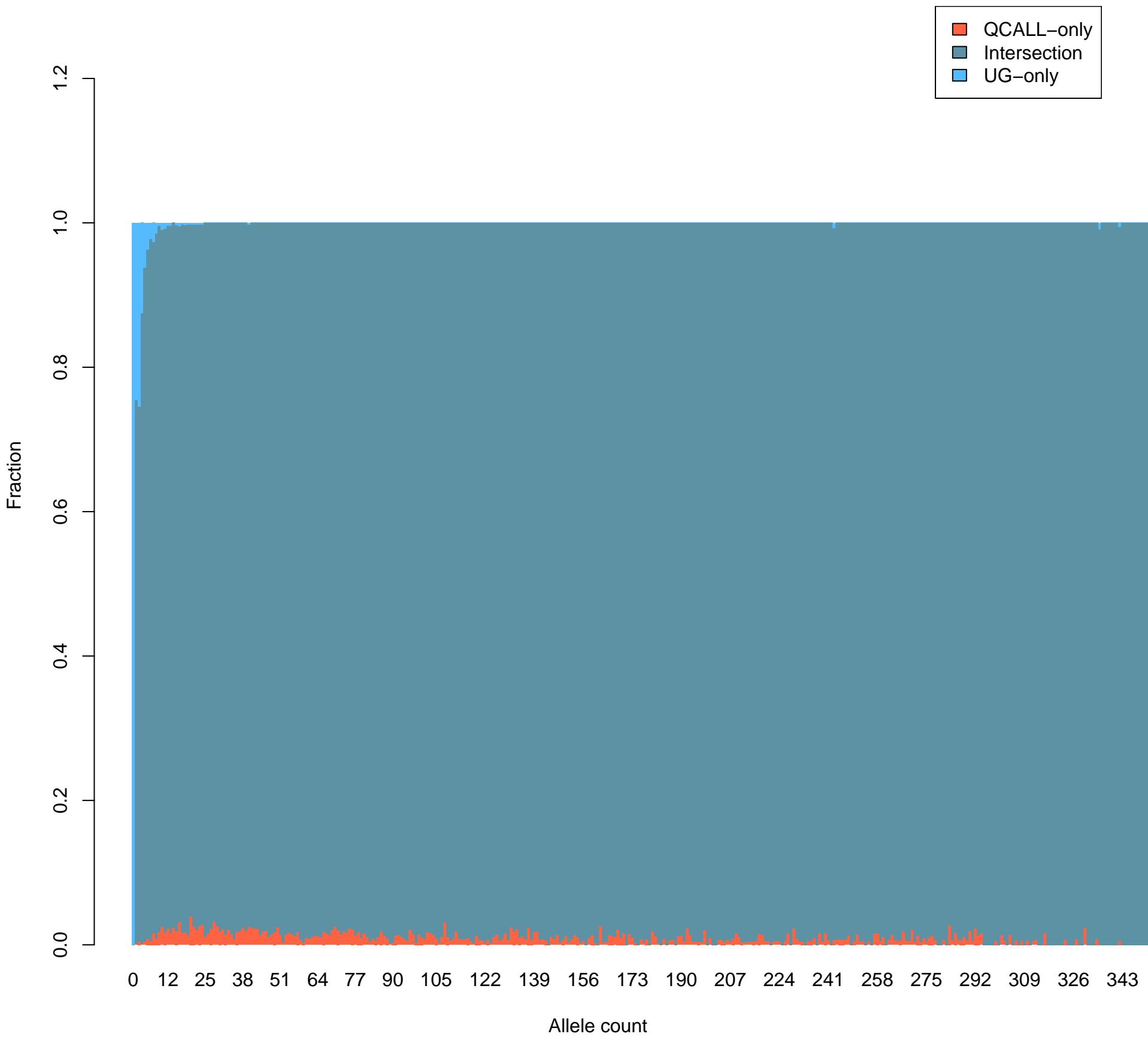
Known: 1986, Ti/Tv: 1.2

Novel: 5355, Ti/Tv: 0.6

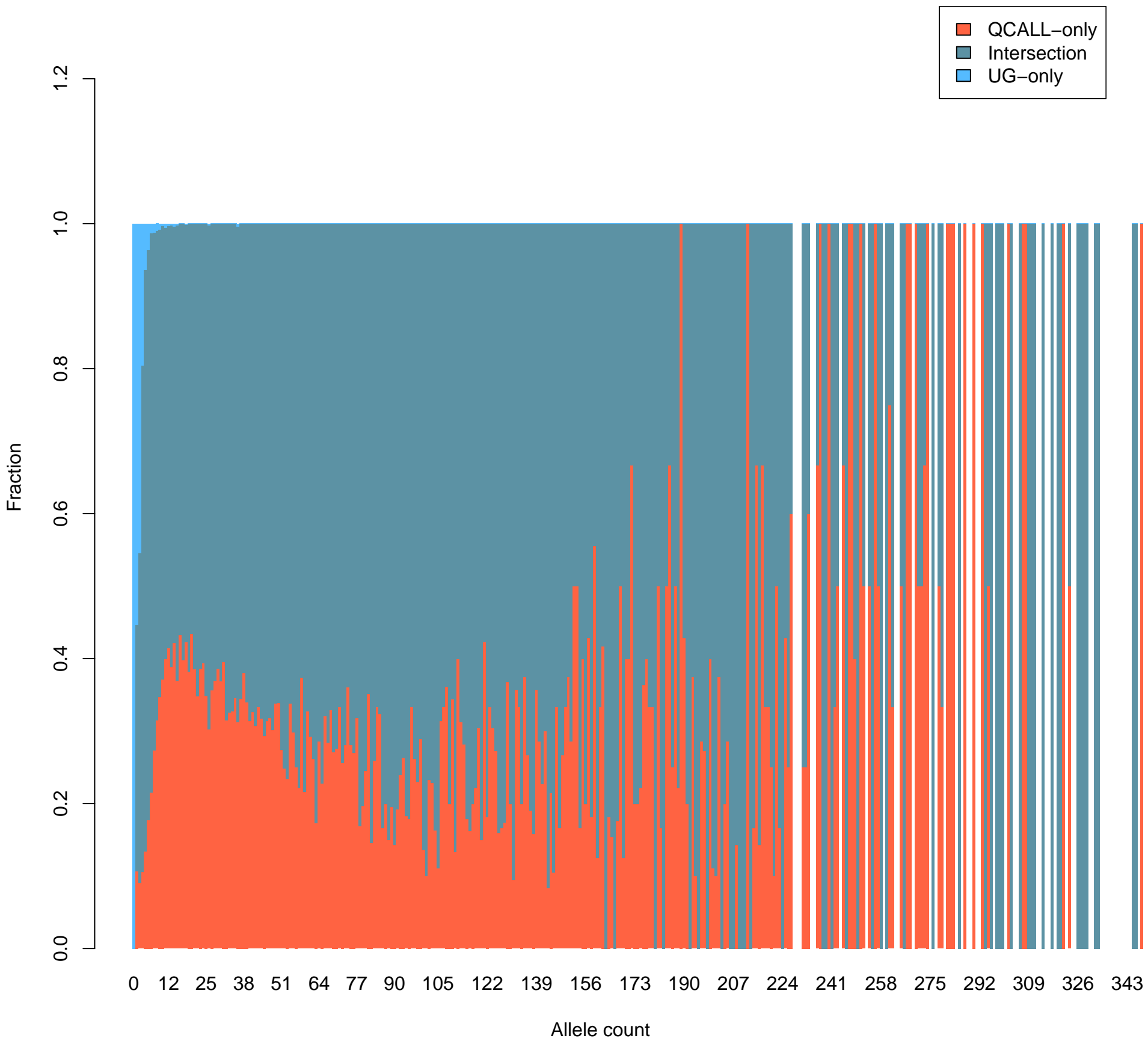
# Callset concordance per allele count (all variants)



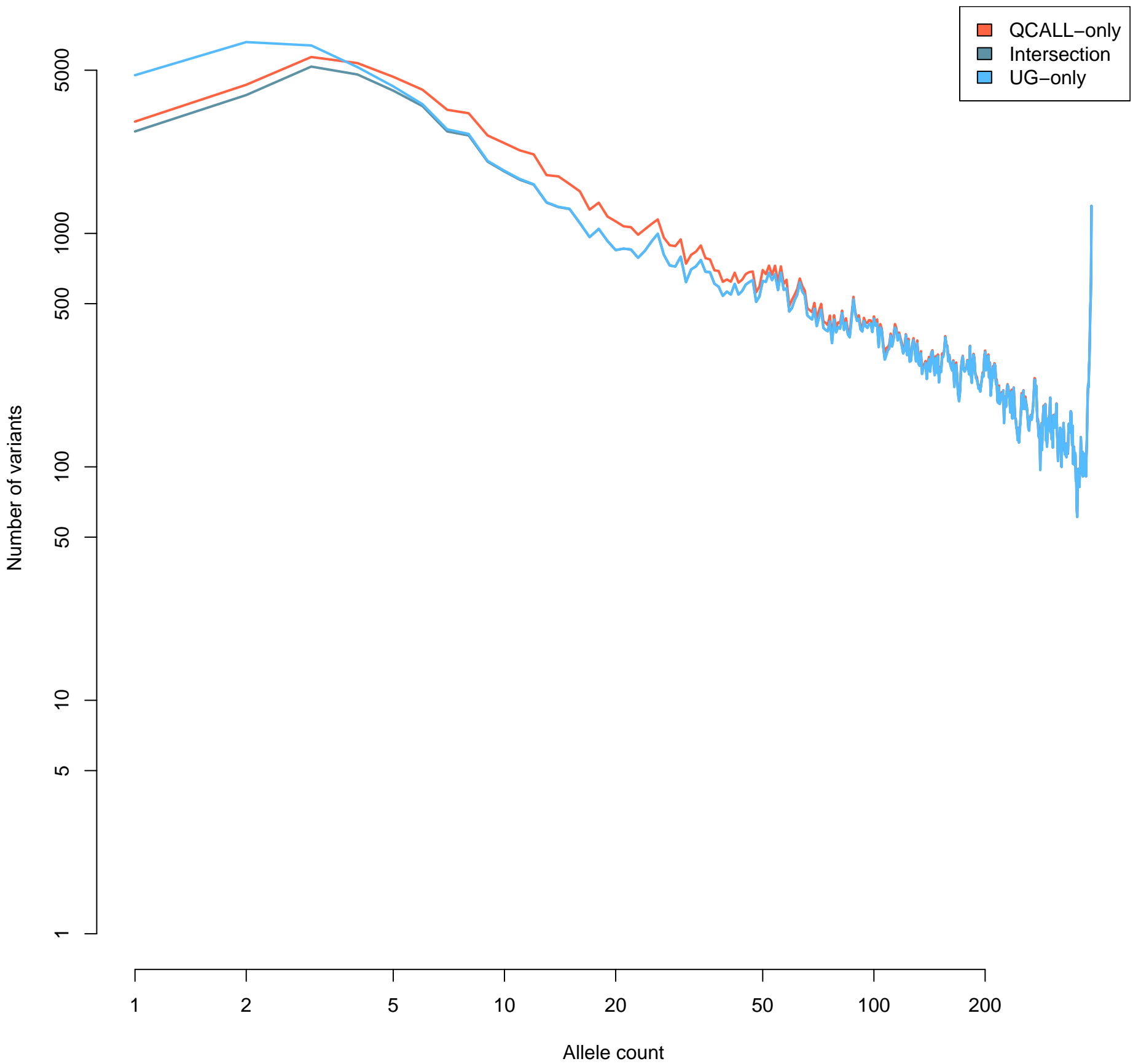
# Callset concordance per allele count (known variants)



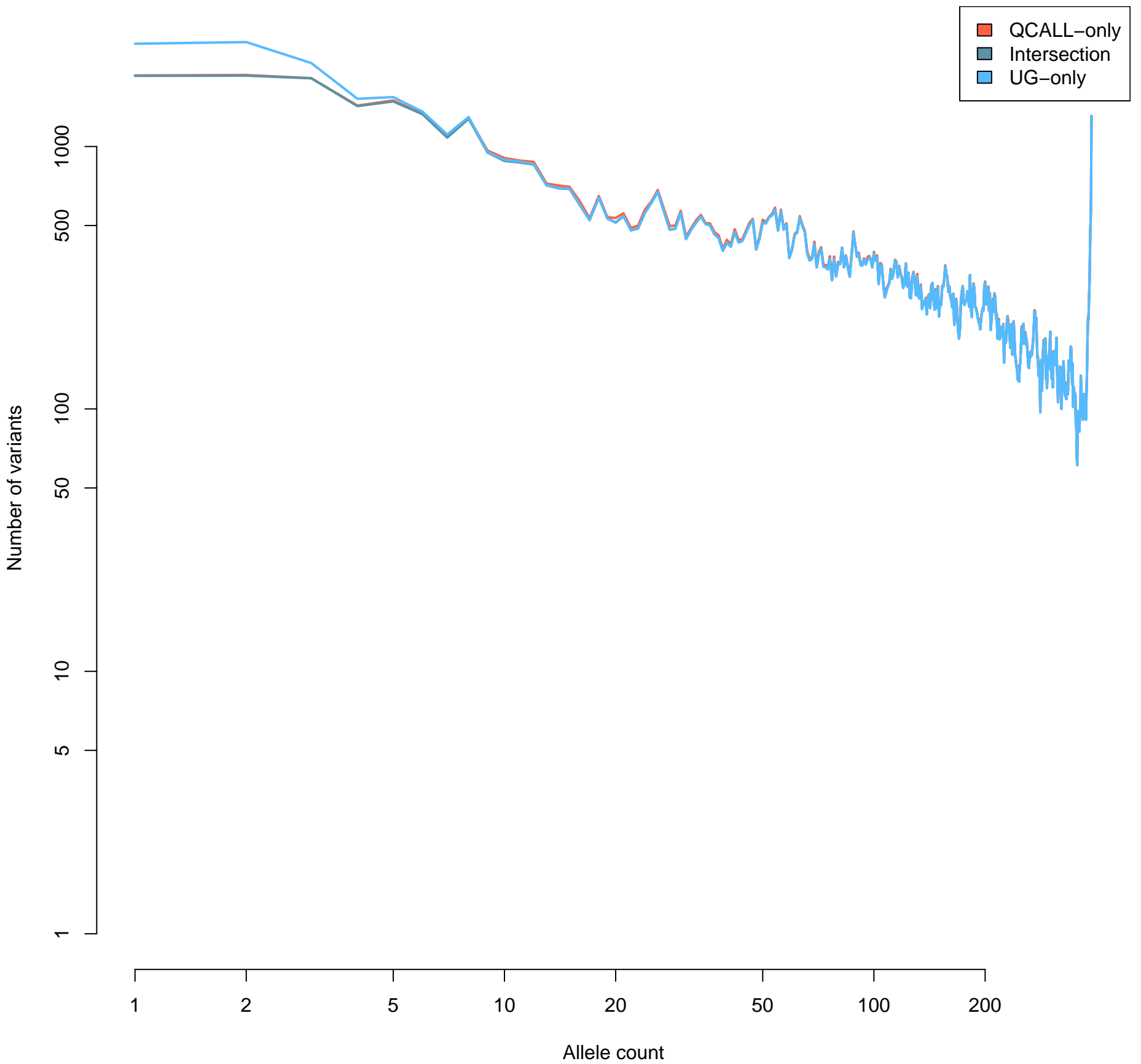
# Callset concordance per allele count (novel variants)



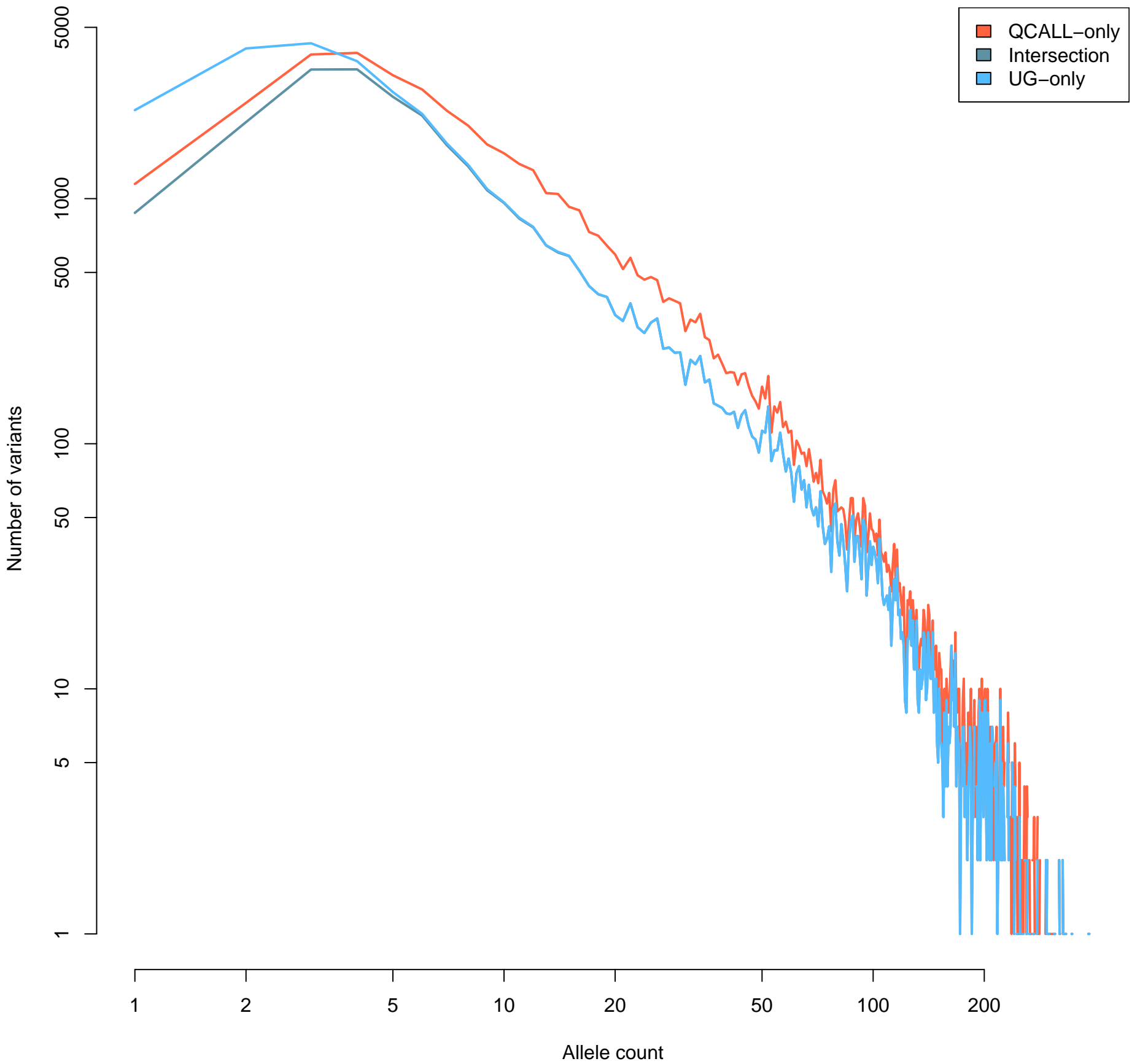
# Allele count spectrum (all variants)



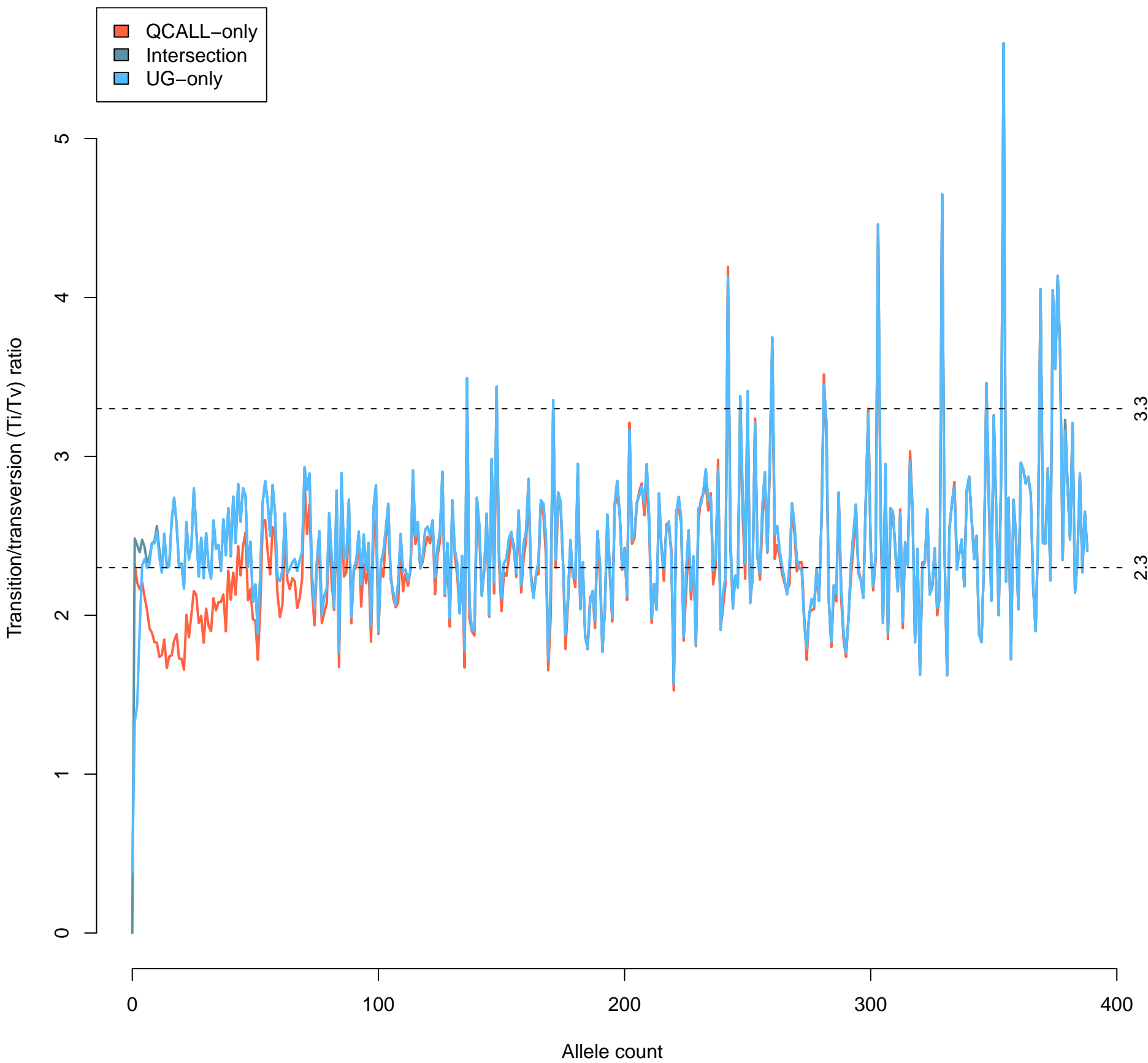
# Allele count spectrum (known variants)



Allele count spectrum (novel variants)

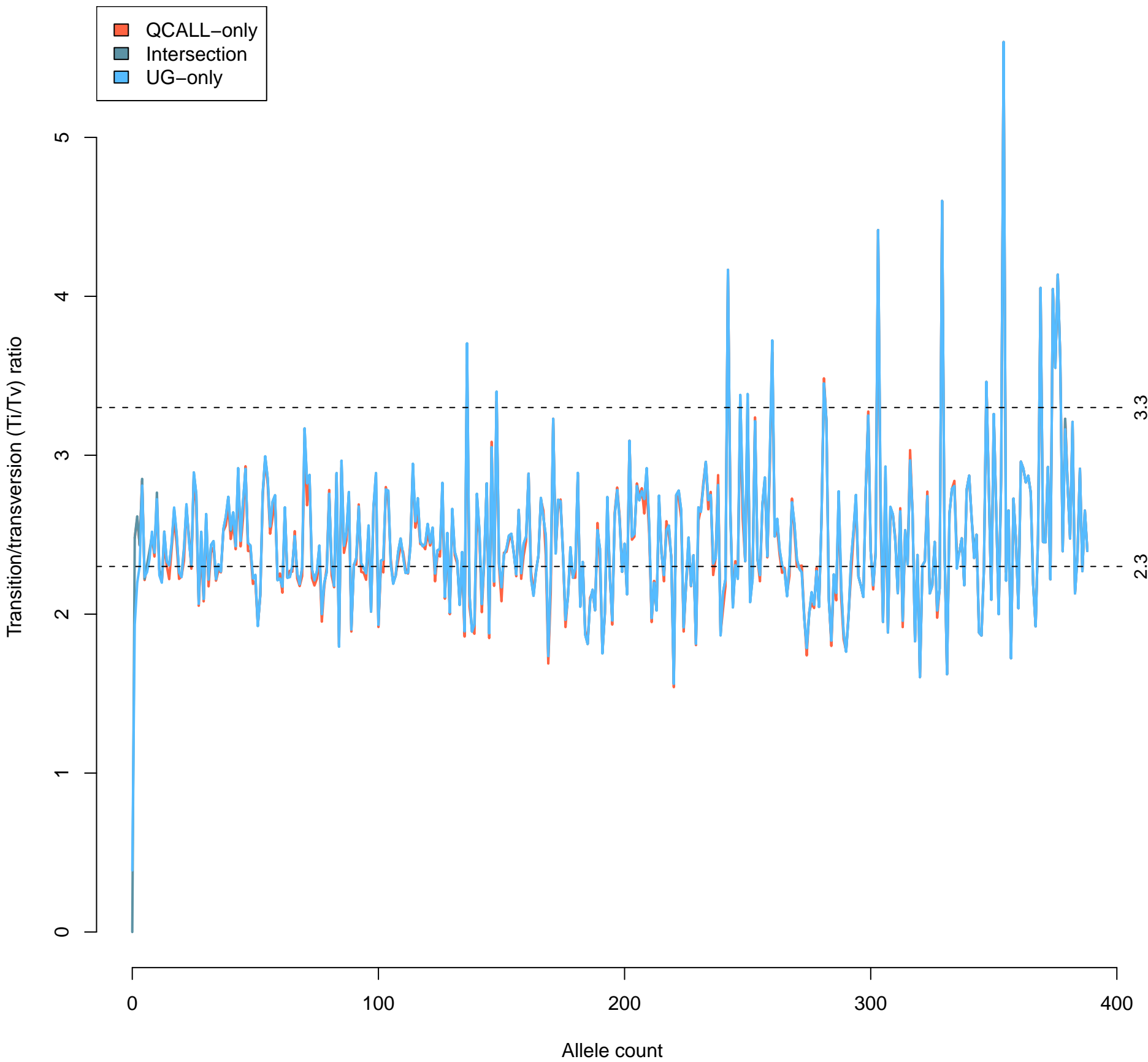


# Ti/Tv spectrum (all variants)





# Ti/Tv spectrum (known variants)



Ti/Tv spectrum (novel variants)

