

Intersection (85.7% of union)

All: 158670, Ti/Tv: 2.4

Known: 119447, Ti/Tv: 2.4

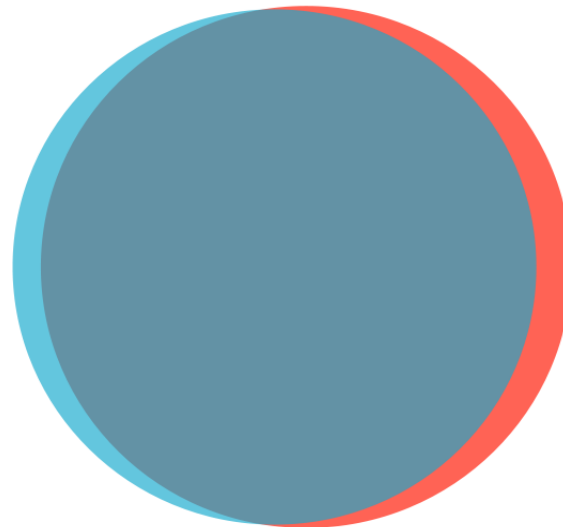
Novel: 39223, Ti/Tv: 2.4

QCALL (8.5% of union)

All: 15781, Ti/Tv: 0.8

Known: 1344, Ti/Tv: 1.1

Novel: 14437, Ti/Tv: 0.8



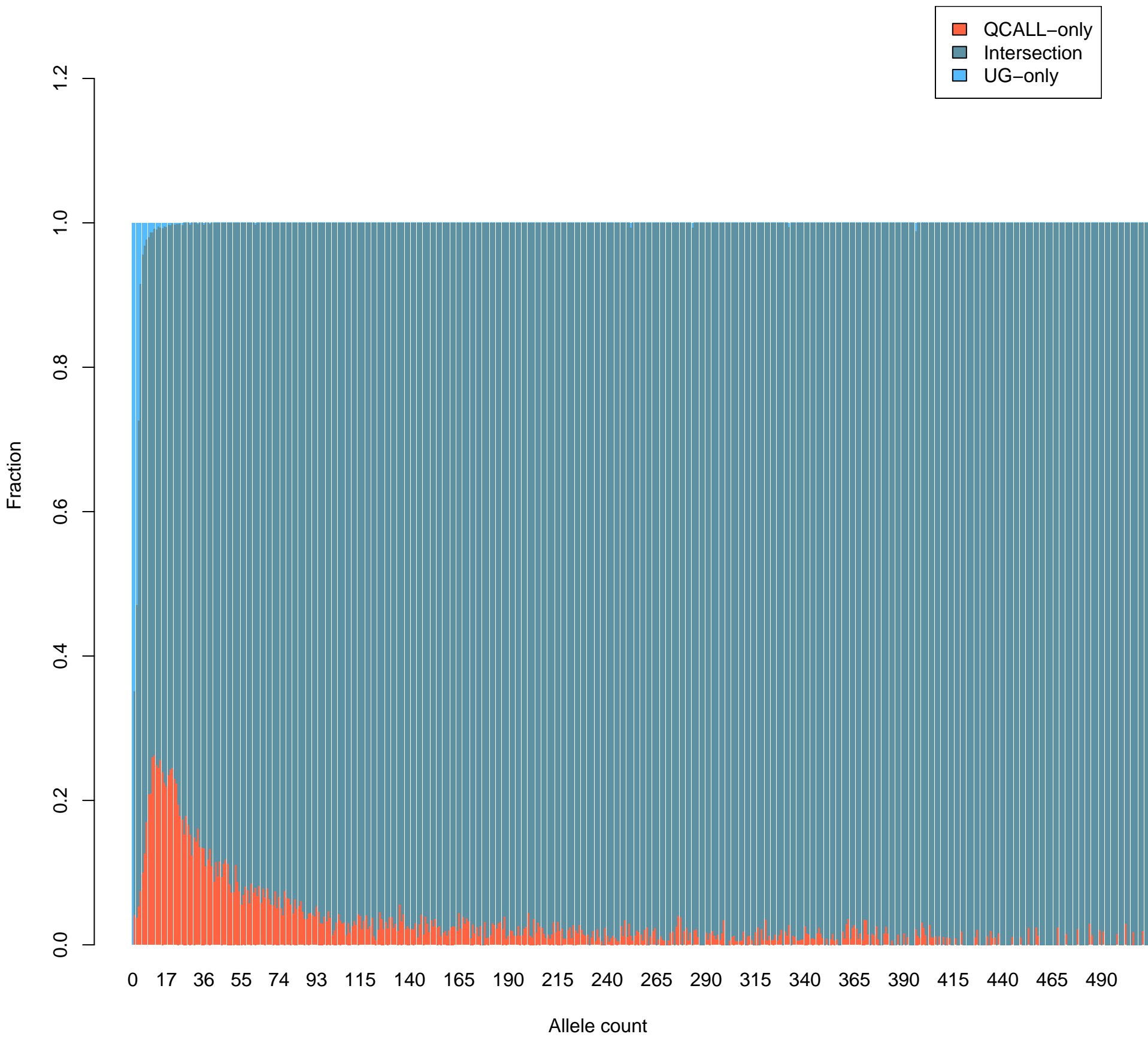
UG (5.8% of union)

All: 10679, Ti/Tv: 0.8

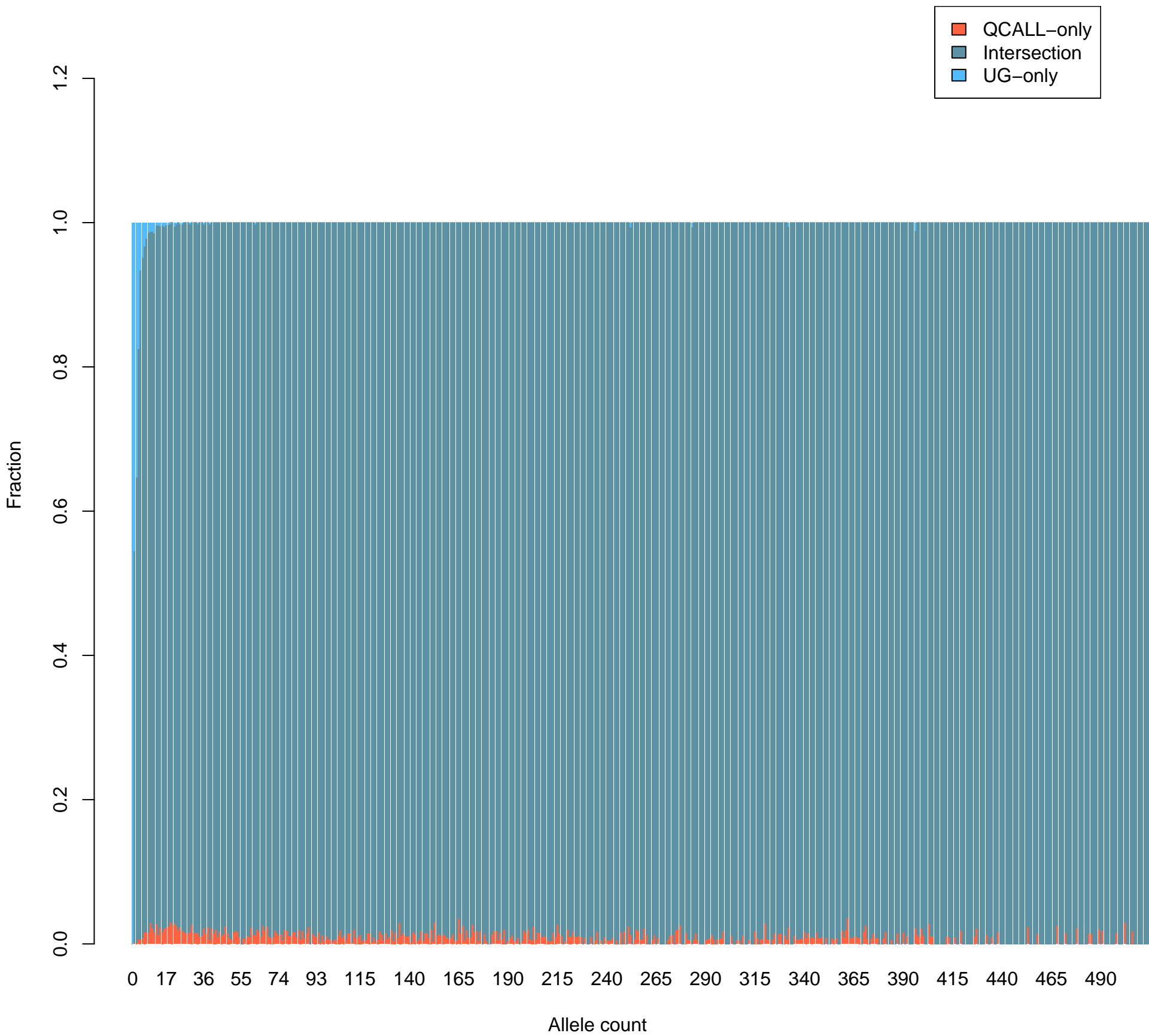
Known: 2576, Ti/Tv: 1.2

Novel: 8103, Ti/Tv: 0.7

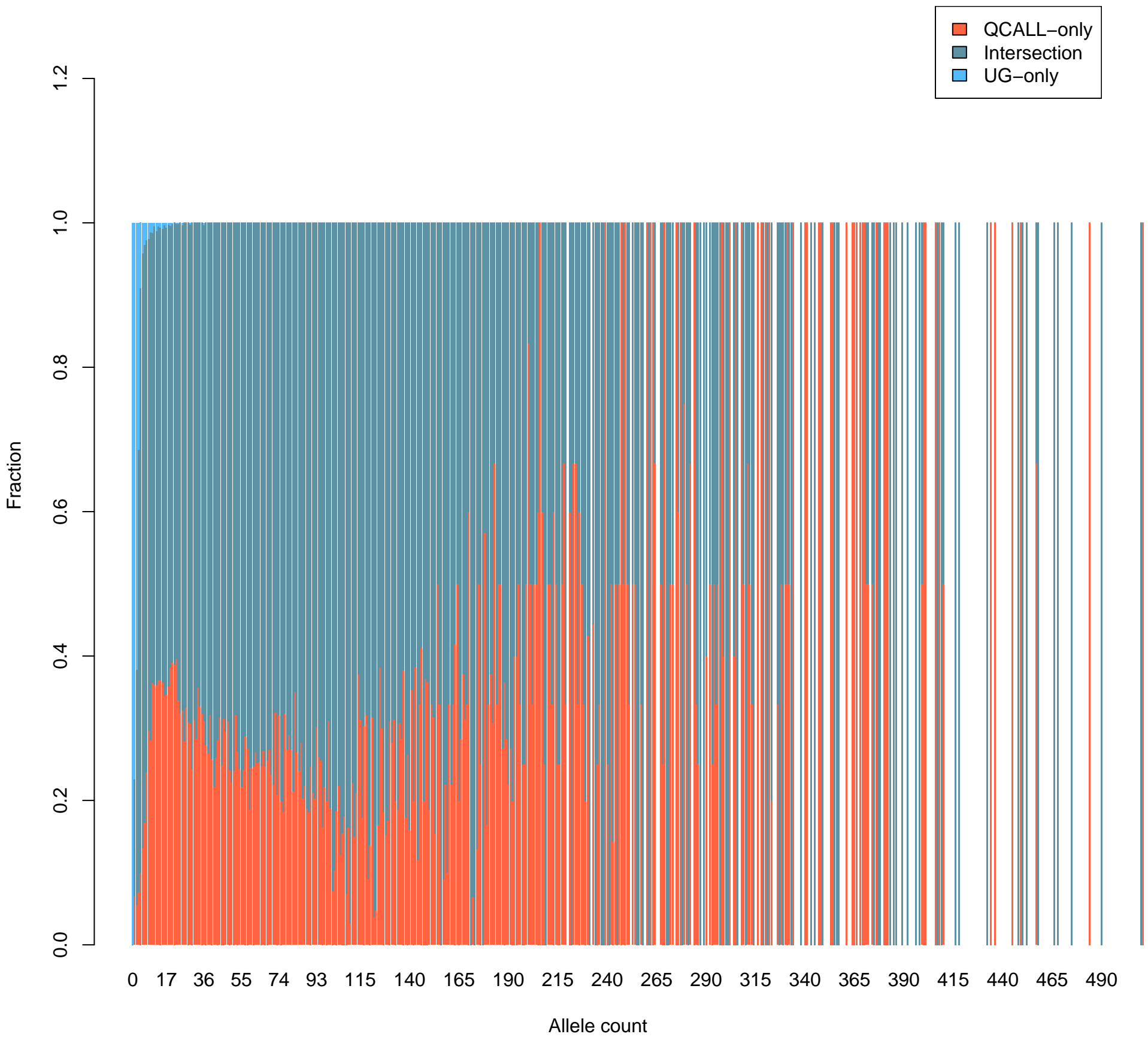
# Callset concordance per allele count (all variants)



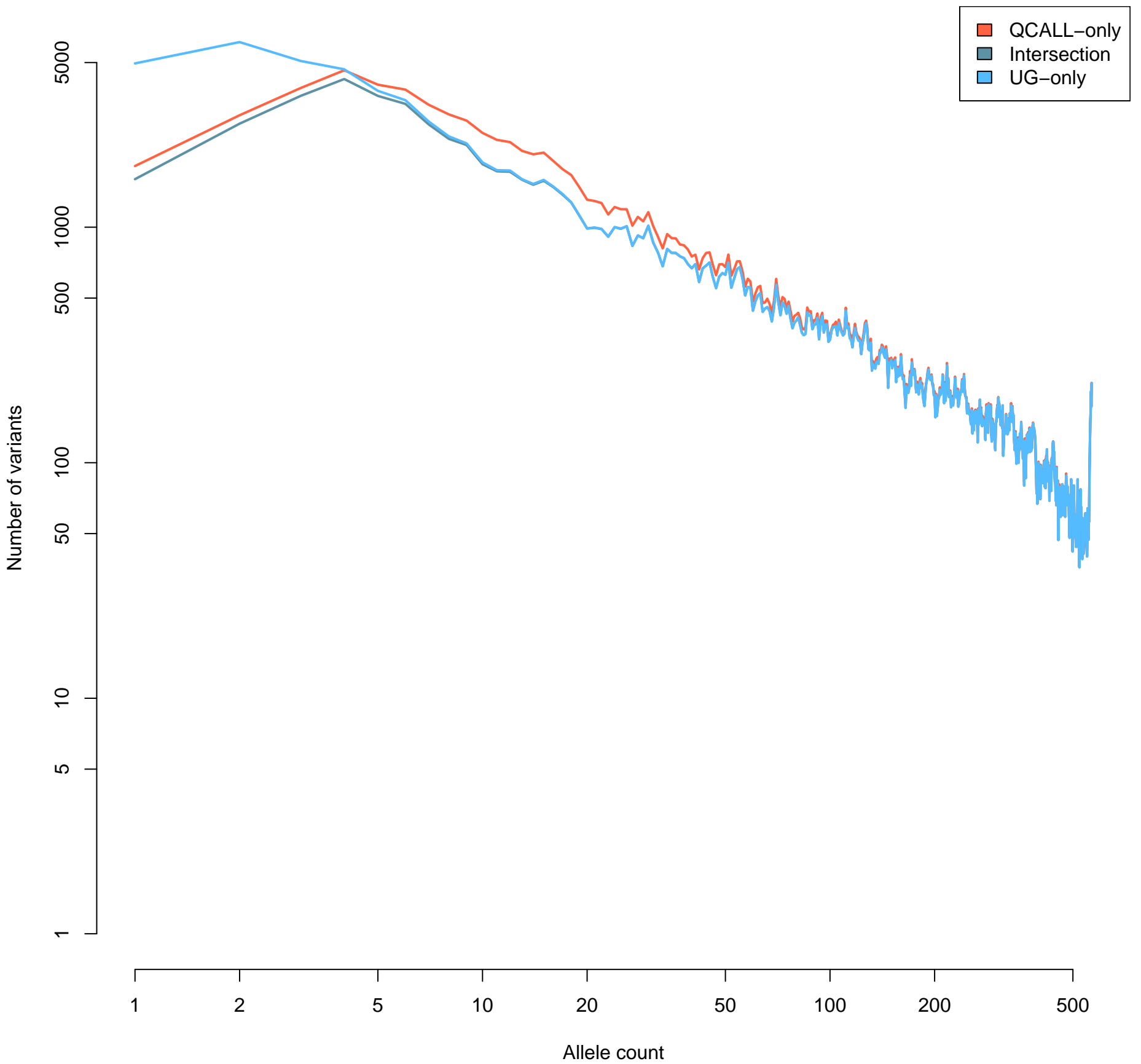
# Callset concordance per allele count (known variants)



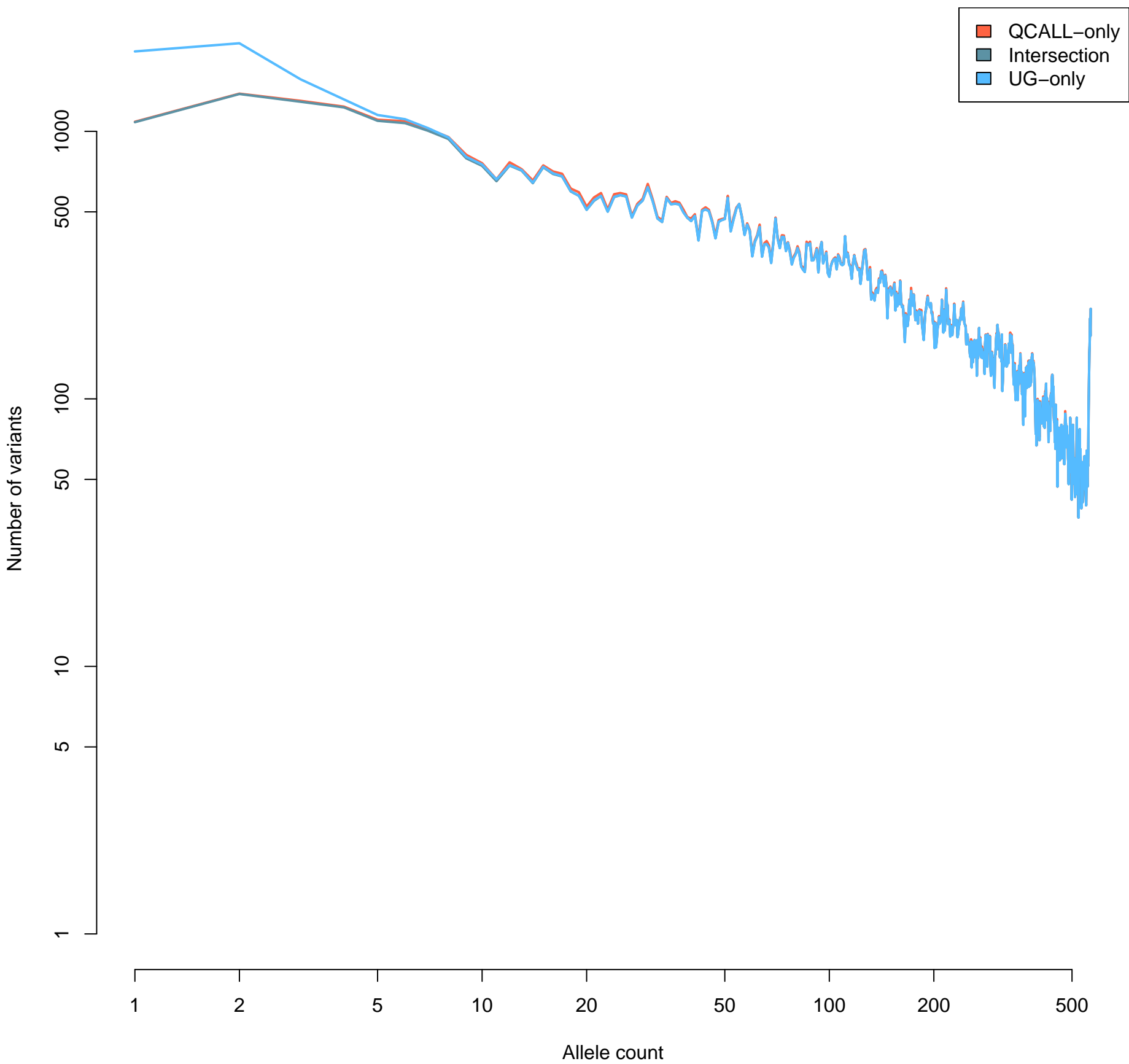
# Callset concordance per allele count (novel variants)



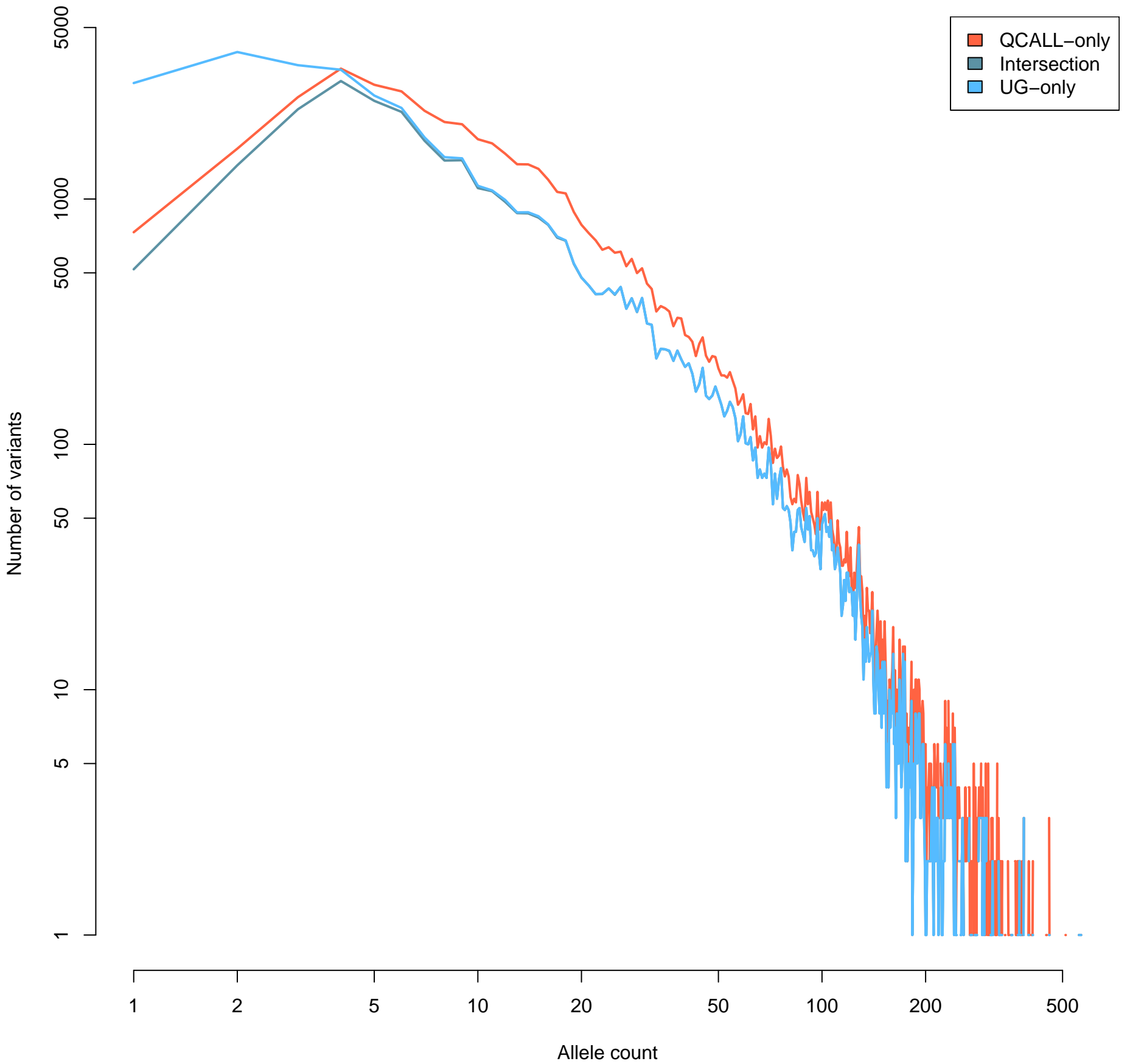
# Allele count spectrum (all variants)



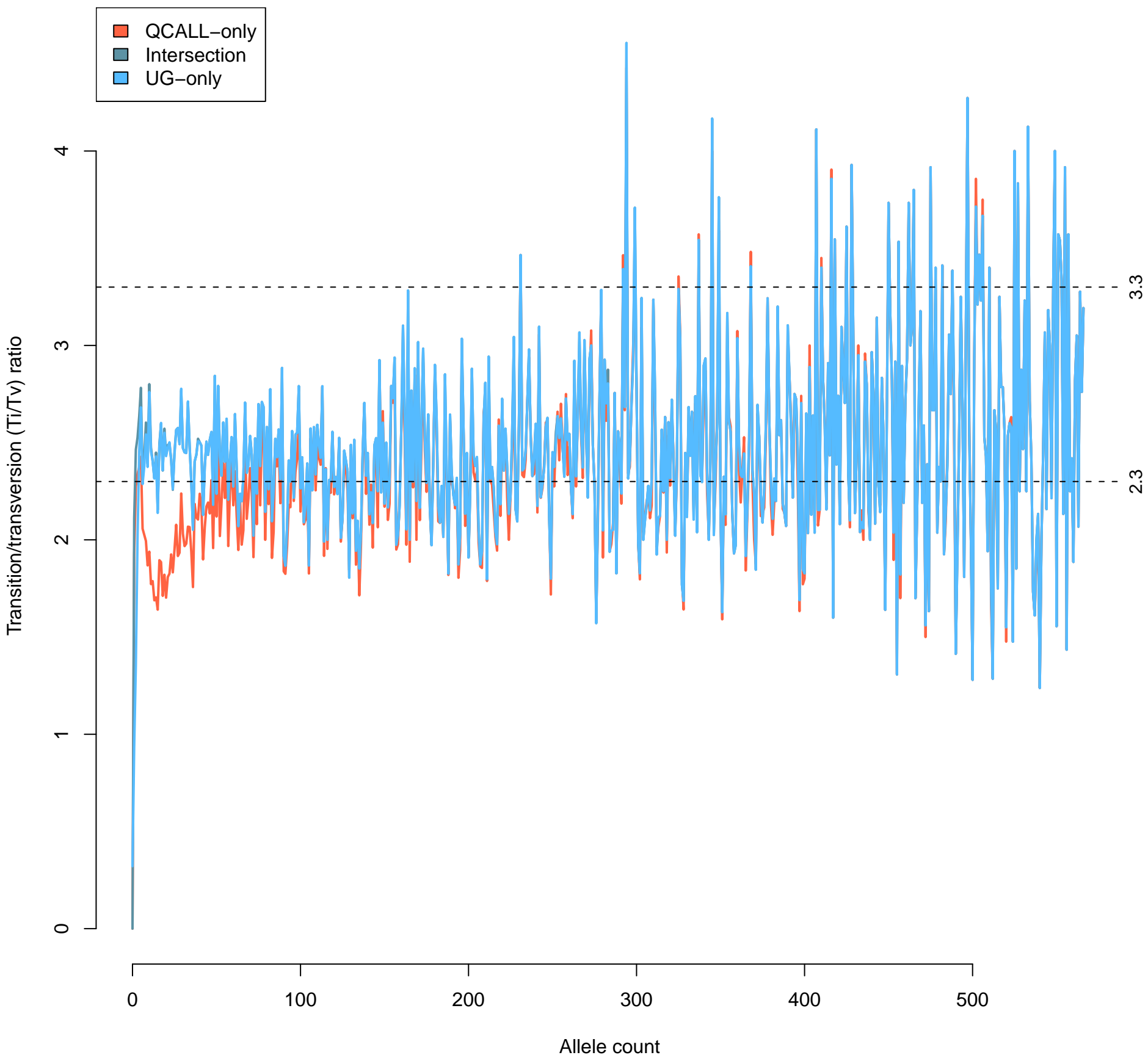
# Allele count spectrum (known variants)



# Allele count spectrum (novel variants)

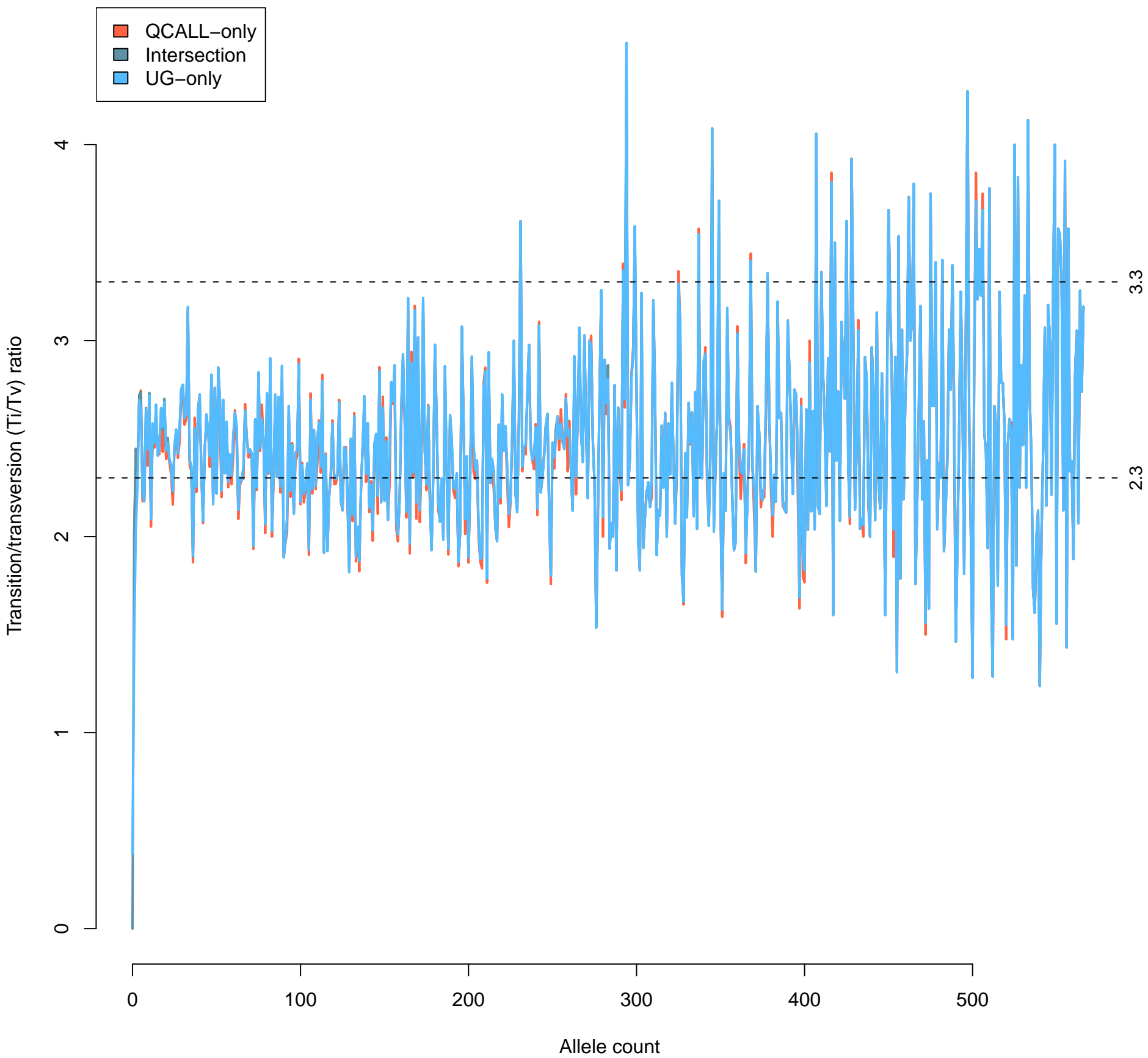


# Ti/Tv spectrum (all variants)





# Ti/Tv spectrum (known variants)



# Ti/Tv spectrum (novel variants)

